
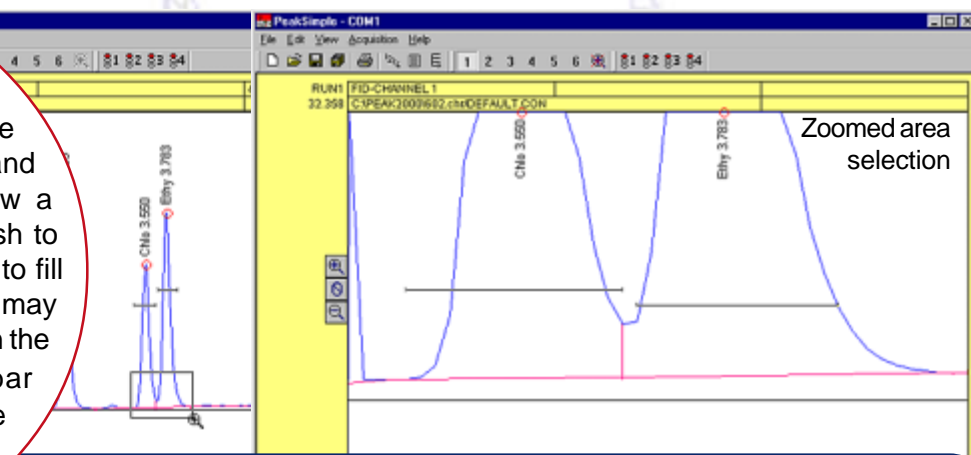


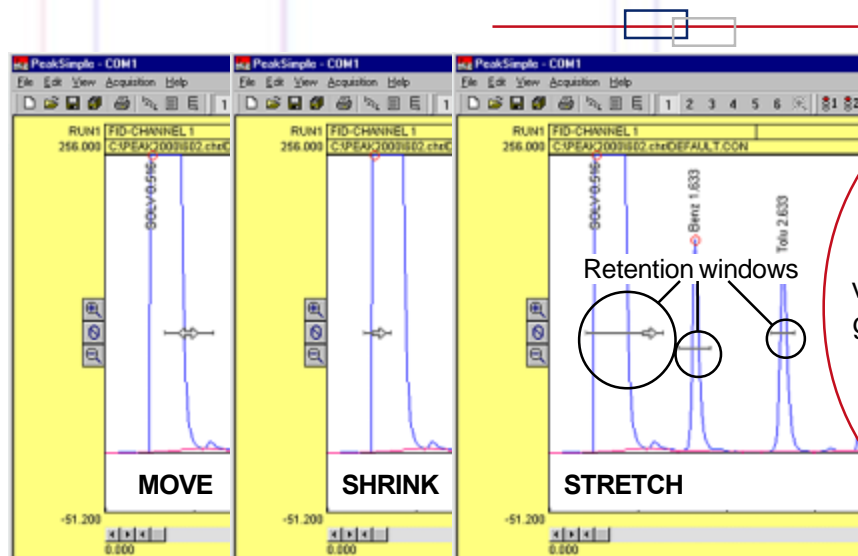


TAKE A CLOSER LOOK AT YOUR DATA

PeakSimple gives you two ways to closely examine data in the chromatogram window. Click and drag the mouse cursor to draw a rectangle around the area you wish to enlarge, and that area will expand to fill the chromatogram window. This may be done multiple times. Clicking on the Unzoom  icon in the toolbar unzooms one level at a time until you return to the original resolution.



A mouse click on one icon  vertically enlarges the peaks in the chromatogram, decreasing the y-axis display limits by a factor of two. A click on another icon  increases the y-axis display limits by a factor of two, which vertically shrinks the chromatogram peaks.



CLICK & DRAG RETENTION WINDOWS

Retention window brackets are visible onscreen, and may be grabbed, dragged onto a peak, widened, or narrowed. The component table is automatically updated when a retention window is graphically moved or modified.

MANUAL INTEGRATION

Manual integration tools permit you to refine the integration method applied to any peak. The manual integration toolbox is available at a click of the mouse. Baseline projection may be “rubber-banded” from point to point, forced to a valley, dropped vertically, skimmed, etc.



The Manual Integration toolbox may be placed above (as shown at right) or to the left of the chromatogram window. It may also be dragged “off” the chromatogram window to float as an independent, move-able window.

