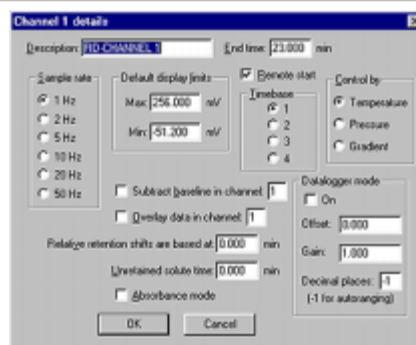
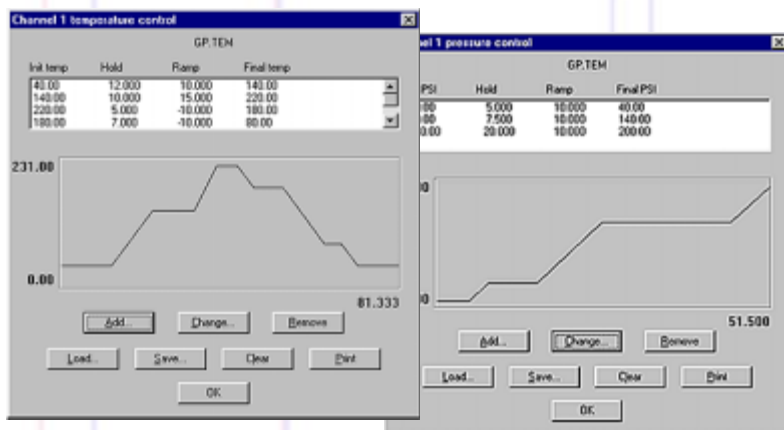


## CHANNEL DETAILS

Each channel has a Channel details dialog box which allows users to set parameters for that particular channel. From the Channel details dialog box, you can set your sampling rate and default millivolt display limits; choose temperature, pressure, or gradient control; subtract the baseline from another channel; overlay the data from another channel; turn Data-logger mode ON or OFF; designate a start time to compensate for relative retention shifts, and more.



## TEMPERATURE PROGRAMMING



## EPC & HPLC GRADIENT PROGRAMMING

“Temperature,” “Pressure,” and “Gradient” channel control options all use the same simple dialog box, and each may be programmed with unlimited ramps and holds. Program one or two SRI GC column ovens from ambient to 400°C with 0.01 degree resolution and negative programming. Program the carrier gas pressure on SRI GCs equipped with electronic pressure control. Form binary HPLC gradients for low-cost pump control.

## MANUAL/AUTOMATIC EXTERNAL EVENT CONTROL

In addition to performing timed integration events, control up to eight external contact closure relay outputs to actuate sampling valves, autosamplers, solenoids, pumps, or any external device using TTL or relay contact closure triggers.



## CONTROL

Eliminate the need to repeat... simply by opening a control file. Maximize reproducibility—it does chromatograph because the control parameters. Save any change you make post-run actions, even color choices, to a control file for each method of analysis that control files you can have is limited only by you.

