

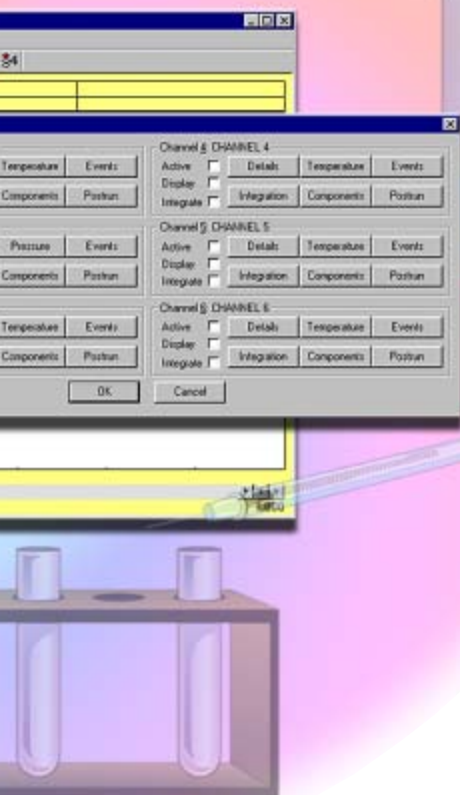


## INTEGRATION

Use the Integration button to determine how PeakSimple integrates the data peaks in the chromatogram. Set peak detection sensitivity, area reject and standard weight. Specify a spike channel, merge results from another channel, and correct for sample weight and dilution.

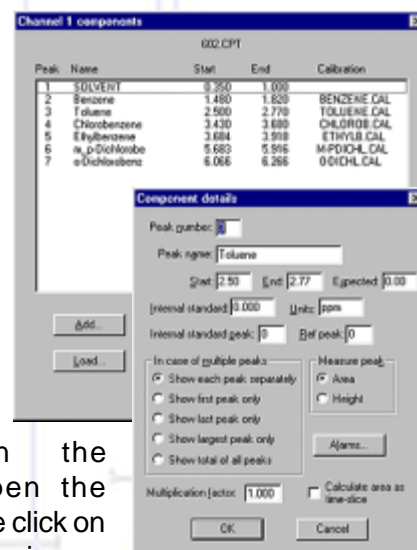
## DL FILES

Specify run parameters before beginning an analysis. It doesn't matter who is operating the files contain all the necessary run parameters in the analysis, from channel details to control file and use it again and again. Create a file that your lab typically performs. The number of files on your disk space.



## COMPONENTS

Create, save and edit component tables with an unlimited number of compounds. Enter expected retention times, control peak display, and more! Component details may be viewed and edited by double-clicking on any retention window in the chromatogram. Or, open the Component table and double click on any component in the list to view or edit that component's details.



## POSTRUN

PeakSimple can perform a variety of postrun actions to help you maintain and organize your data. Specify how data will be saved, and automatically add the results of the run to the results log for that channel. You can set PeakSimple to automatically print the results at the end of a run, and update your DDE link. Execute a command, specify a recalibration level, and restart the run after a given amount of time. You can even have PeakSimple smooth the data before copying it into another channel.