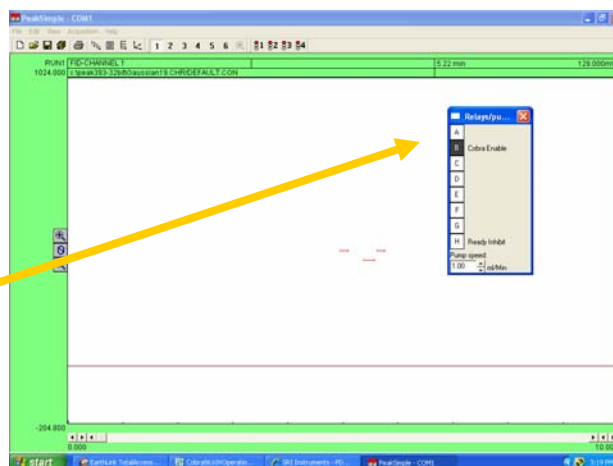


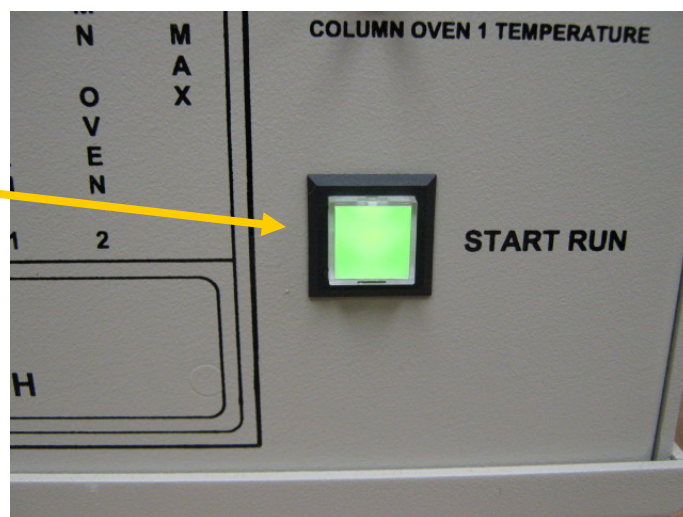
Operation of the Cobra Autosampler on the 8610V gas chromatograph

The Cobra and 8610V GC are now setup, so the sequence is as follows:

1) Operator clicks Relay B on PeakSimple screen.



2) GC ready light comes on. This tells Cobra to begin injection sequence.



3) At the moment the Cobra syringe enters the GC injection port, the analysis begins. PeakSimple turns on Relay H which inhibits the Cobra from beginning another injection.

4) Relay H turns off just before analysis ends. GC cools down and stabilizes. When the GC ready light turns on again the next sample is injected. This is repeated until all the samples are injected.

