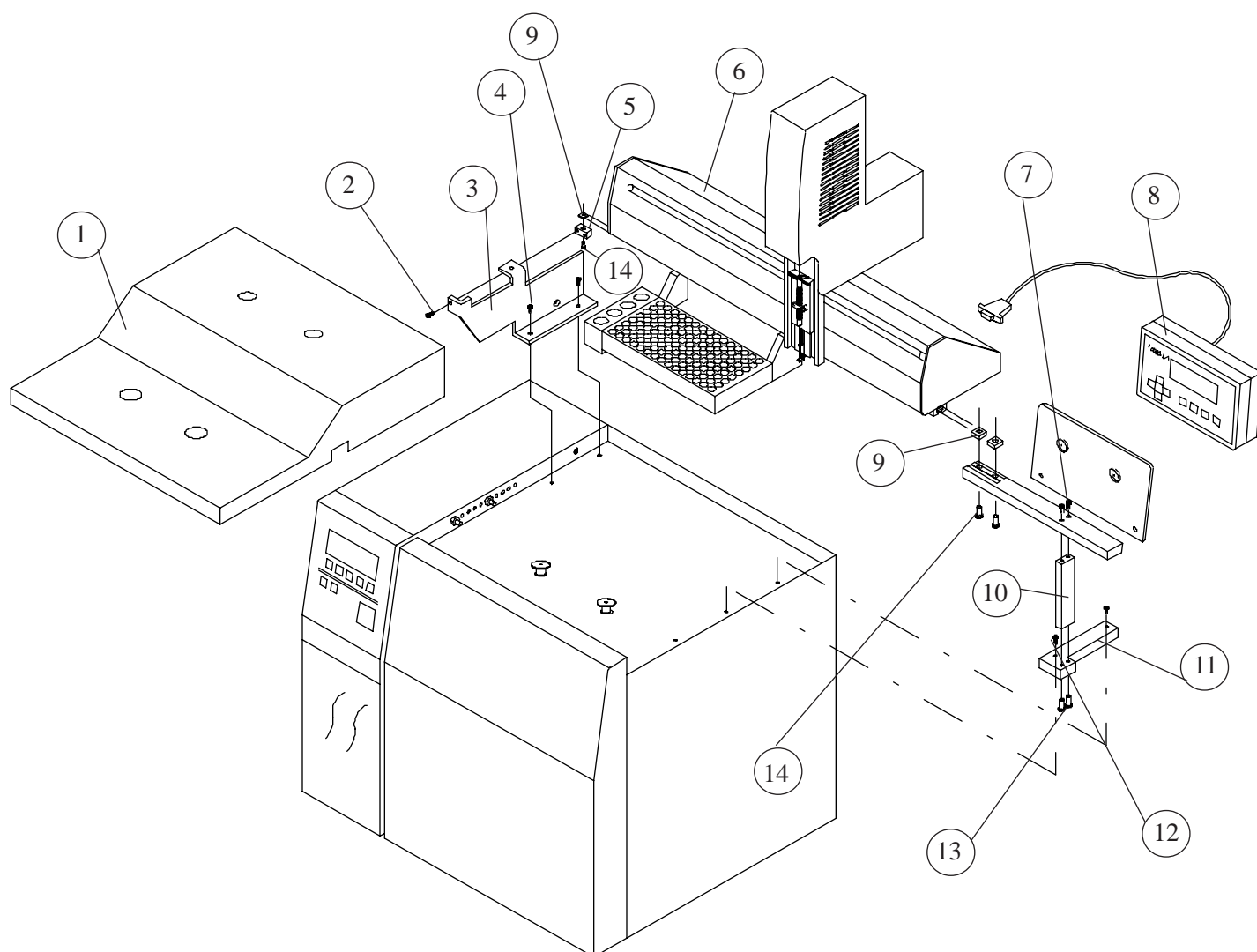


11.1 Installation of the Cobra L/S to the Gow-Mac 600 Gas Chromatograph



1. GC Oven Top
2. 6-32 x 1/2" SH Screw W/ #6 Lockwashers
3. Left Mount Bracket
4. 10-32 x 1/2" SH Screws W/ #10 Lockwashers
5. Bracket Mount Block
6. Cobra L/S
7. 8-32 x 1/2 SH Screws
8. Keypad Terminal
9. 10-32 Square Nuts
10. Right Vertical Mount Block
11. Right Bottom Mount Block
12. M4 x 20mm Screws
13. 8-32 x 1/2 SH Screws W/ #8 Lockwashers
14. 10-32 x 1/2" SH Screws