

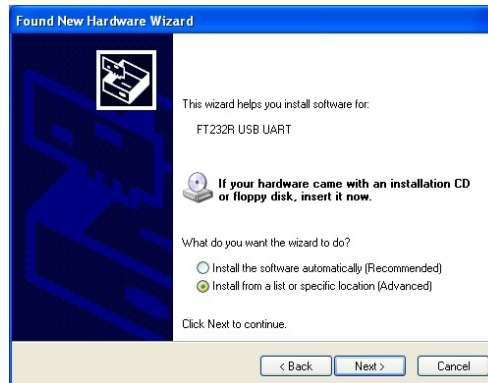
## Appendix 1: Installing USB Drivers

### Windows XP

1. Connect the actuator to a USB port on your PC. The Found New Hardware Wizard will pop up on your screen.



2. Select "Install from a list or specific location (Advanced)" as shown below. Click Next to continue.



3. Select "Search for the best driver in these locations" and enter the file path in the combo box or browse to it by clicking the browse button. Once the file path has been entered in the box, click Next to proceed.

