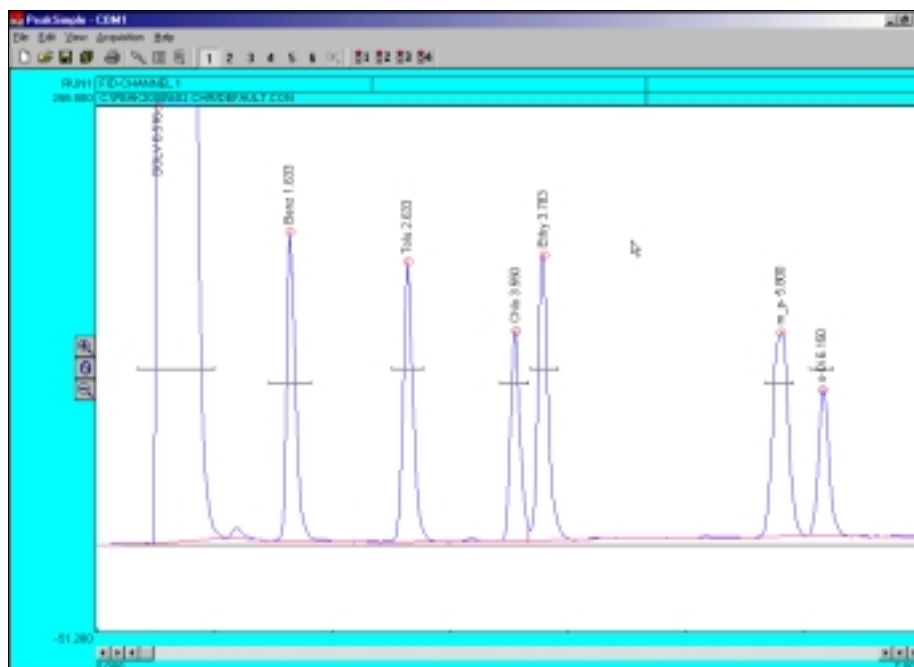


SRI Instruments

PeakSimple 2000

Chromatography Integration Software

Basic Tutorial



Installing PeakSimple 2000 from floppy disk or CD-Rom

- A. Start the Windows operating system in use on your computer. (Windows 95, 98, ME, 2000)
- B. Insert the PeakSimple 2000 disk or CD into your floppy disk drive.
- C. Go to the **Start** menu in the bottom left hand corner of the windows screen and select **Run** from the set of icons.
- D. From the run menu, type **X:\setup** (where **X** is the letter of your computers disk drive).
- E. Now click on the **Continue** button with your mouse cursor or press the enter key on your keyboard to begin installation.
- F. To complete installation follow the onscreen instructions provided by the installation wizard.

Installing PeakSimple 2000 from software download

- A. Start the Windows operating system and use an online browser to access www.srigc.com.
- B. From the menu on the left hand side of the screen select **Download our Software** and then download PeakSimple 2000 from the following page.
- C. Save the file to a temporary folder and then double click on it from My Computer to allow the program to self-extract.
- D. Once all the files have been extracted successfully double-click the install file and press the **Continue** button when prompted.
- E. Follow the onscreen instructions to complete the installation of PeakSimple.