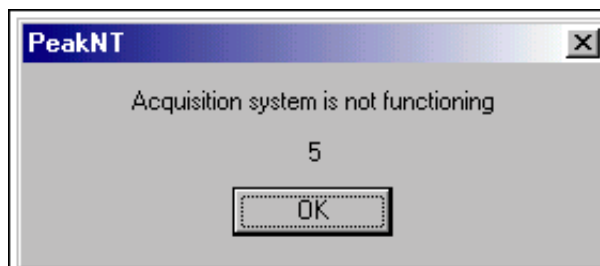
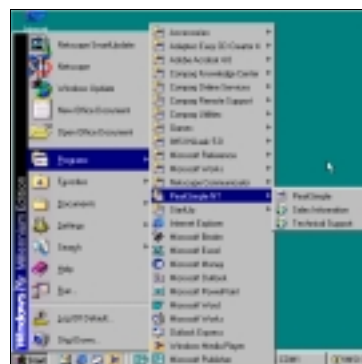


## Launching PeakSimple 2000

1. Click on the windows **Start** button in the bottom left-hand corner of the screen. Select **Programs** and then **PeakSimple** from the list of program groups on the screen and then click on **PeakSimple**.
2. This will launch PeakSimple and initialize the data acquisition system.
3. If PeakSimple comes up with an error message stating "Acquisition system is not functioning" with a countdown timer, it is indicating that there is a communication problem between the computer and the data system or that the data system and the hardware is not connected. Click **OK** to continue working with PeakSimple.
4. Most of the commands and options in PeakSimple are equipped with tool tips that will automatically pop up to display useful information when the mouse cursor is held over a command. To turn off the tool tips deselect the tool tips option in the Help menu.



Click this button to jump to the integration parameters screen. This is sometimes useful when reviewing the results data. For example, if the area reject caused some peaks to be skipped, you can jump right to the integration parameters and adjust the area reject number.

## Opening a PeakSimple Data File

1. To open a PeakSimple data file or chromatogram, begin by selecting **File** in the PeakSimple menu bar and then choose **Open...** from the set of options.
2. The Load Chromatogram File window is now open. The PeakSimple software includes a number of sample chromatogram data files that can be opened, displayed, and manipulated. One file, 602.CHR, will be used throughout the rest of the tutorial. Select file **602.CHR** from the PeakSimple directory, choose **Channel 1** as a destination channel, and then select **Open** to load the file.

