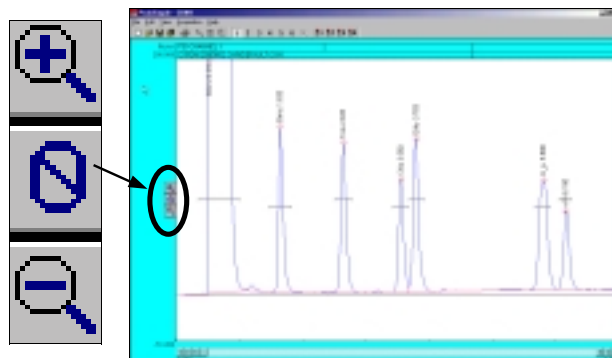


Adjusting Display Limits

1. To adjust the display limits of a chromatogram click on either the + magnifying glass icon or the - magnifying glass icon to the left of the chromatogram. This will increase or decrease the limits by a factor of two each time you click on the icons.
2. After opening chromatogram 602.CHR, practice making the display limits smaller but the peaks larger by clicking the + magnifying glass icon.
3. Practice making the display limits larger but the peaks smaller by clicking on the - magnifying glass icon.



Zooming

1. To zoom in on a specific part of a PeakSimple chromatogram, click and hold the left mouse button and drag it over the desired area.
2. After opening chromatogram 602.CHR hold the left mouse button and drag it over the base of the toluene peak. Let go of the mouse button and there will be a larger view of the area that was selected.
3. To return to the original display limits of the chromatogram and unzoom the area selected press **F6** or select the unzoom icon located in the PeakSimple toolbar at the top of the screen.

