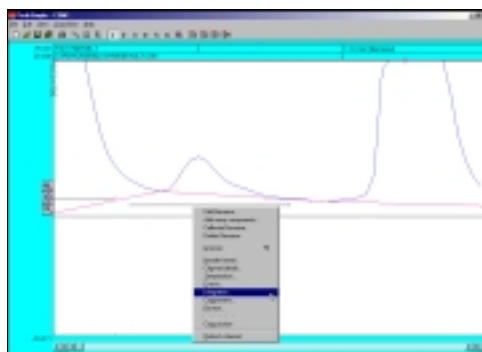
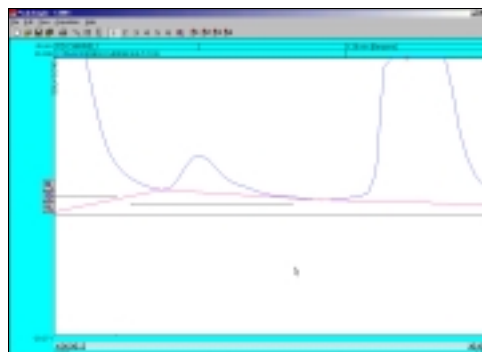
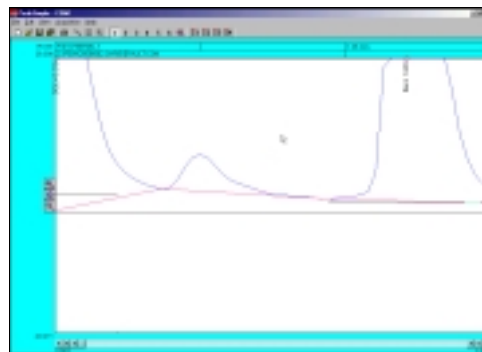


## Dragging Retention Windows

1. To drag a retention window bar place the mouse cursor on the bar until a double sided arrow pops up. Click on the left mouse button and hold and then drag the retention window bar to its desired place.
2. After opening the chromatogram 602.CHR zoom in on the benzene peak and the smaller peak to its left. Locate the benzene retention window bar and drag it over to the smaller unnamed peak to the left of the benzene. Because this is a small peak it is not immediately recognized.
3. Right click on the chromatogram over the unnamed peak and select **Integration** from the resulting menu.
4. From the integration window locate the **Area Reject** dialogue box, erase the 100.0 in the box, and add the number **10.0** to the dialogue box. Click **OK** and the integration window will exit.
5. Press the **Enter** or **Return** key on your keyboard and the smaller peak will now be recognized as Benzene.



Channel 1 integration

Peak detection sensitivity  
 Peak: 95.00 %  
 Base line: 50.00 %  
 Area reject: 10.0

Spike channel  
☐ None  
☐ 2  
☐ 3  
☐ 4  
☐ 5  
☐ 6

Merge results non channels  
☐ 2  
☐ 3  
☐ 4  
☐ 5  
☐ 6

Standard weight: 1.000  
 Sample weight: 1.000

OK Cancel

