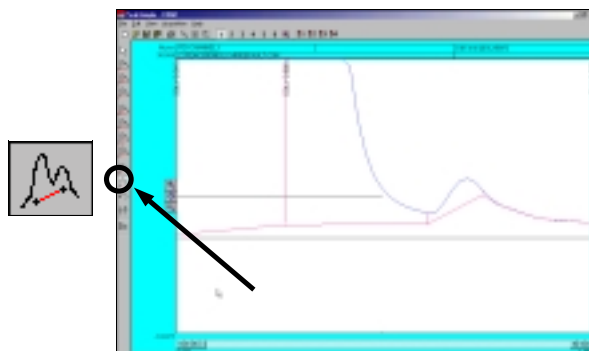
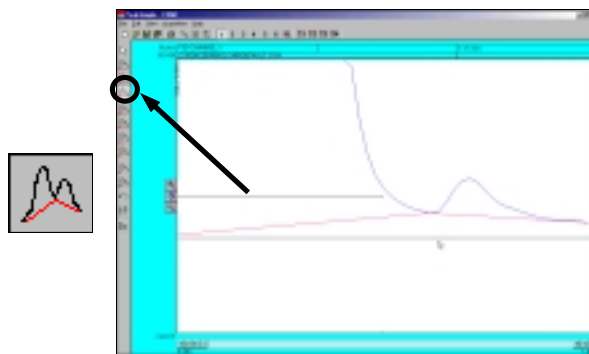


- After the manual integration between the two peaks is dropped use the **Based** integration tool to raise the baseline to the valley between the peaks. Once the Based integration tool is selected, click on the valley between the solvent peak and the smaller peak to its right with the mouse cursor. The baseline will now extend up to meet the valley of the two peaks.
- Once again click on the **Undo** tool in the manual integration toolbar to remove all changes done to the chromatogram. Select the **Rubber Band** integration tool to manually draw a baseline. Once the Rubber Band tool is selected take the mouse cursor and click on a part of the baseline. While holding down the left mouse button extend the line to another part of the baseline further to the right of the starting point and let go of the mouse button. The base line will now be drawn according to the line that was drawn using the Rubber Band integration tool.



## Calibration

- To turn the raw area of a peak into a real-world number the peak first needs to be calibrated. To calibrate the Toluene peak in chromatogram 602.CHR, open up the file and then right click using the mouse on the Toluene peak. After right clicking on Toluene select **Calibrate Toluene** from the resulting menu.
- From the Recalibration level window click on the third level radio button **3 (100.000)** and then select **OK** with your mouse cursor.

