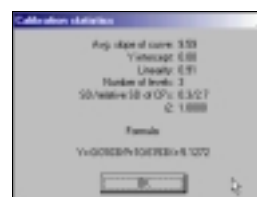
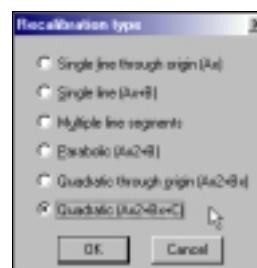
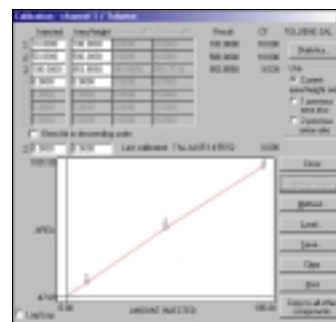


- After selecting OK from the Recalibration level menu the Calibration menu for Toluene will pop up. Check to make sure the flashing asterisk on the calibration curve is on level 3 and then click on the **Accept New** button to the right of the window.
- Once the new data is accepted, click on the **Method** button immediately below the Accept New button. The Recalibration type window will now open allowing the user to select a method of calibration. By default the calibration type is set at Multiple Line Segments. Select the **Quadratic (Ax^2+Bx+C)** radio button and then click on **OK** with the mouse cursor.
- After changing the method of calibration click on **Statistics** in the upper right hand corner of the Calibration level window. The Calibration statistics window will pop up revealing the statistics for the calibration of Toluene. Click **OK** with the mouse cursor to close the Calibration statistics window and then select **Close** from the Calibration window to finish calibrating Toluene.



Overlay

- To compare two or more chromatograms overlay them using PeakSimple. To overlay two chromatograms first open chromatogram 602.CHR and then click on the **2** button in the PeakSimple toolbar. A second chromatogram channel is now open in the PeakSimple window.
- Once the second channel is open select **File** from the PeakSimple menu bar and then click on **Open**. The Load chromatogram file window will open up displaying a list of files to load. Select chromatogram **FID602.CHR** to load and then select the **2** channel radio button to load the chromatogram in the second channel.

2

