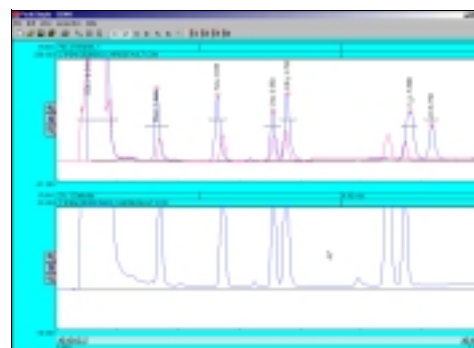
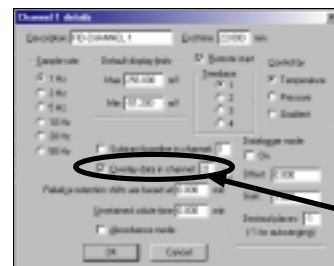
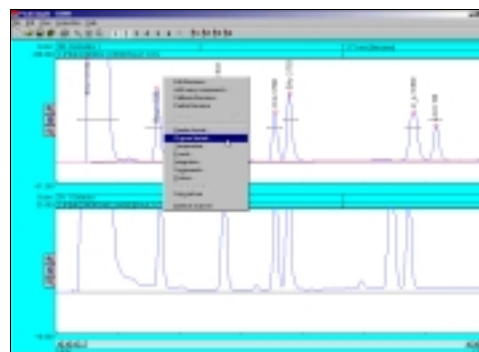


- Once FID602.CHR is open in the second channel right click using the mouse on the chromatogram in the first channel and select **Channel Details** from the list of options.
- After the Channel 1 details window appears on the screen locate the **Overlay data in channel** check box and select it. Look to the dialogue box to the right of the Overlay data in channel check box and insert the number **2** in place of the 1. Click on **OK** with the mouse cursor to exit the Channel 1 details window.
- The chromatogram FID602.CHR is now in place overlaid on top of chromatogram 602.CHR in channel 1. Chromatogram 602.CHR is in blue while FID602.CHR is in red.



## Printing a Chromatogram

- To print a chromatogram first open chromatogram 602.CHR. Once the chromatogram is open select **File** from the PeakSimple menu bar and then select **Print** from the drop-down menu.
- The Print window will open and will allow the user to customize the printing of a chromatogram. Click on the **Format** button for the Print header to open up the Header format window. Add or delete any information in the window by clicking on the fields and inserting the desired information. Click on the **OK** button when all the desired information is inputted to close the window.

