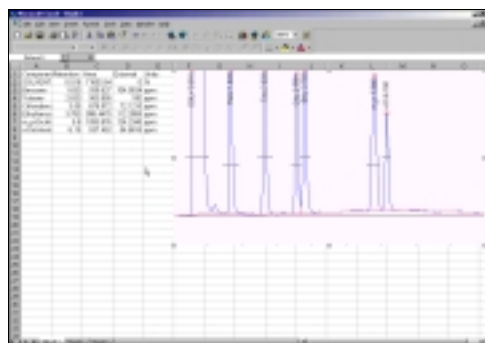
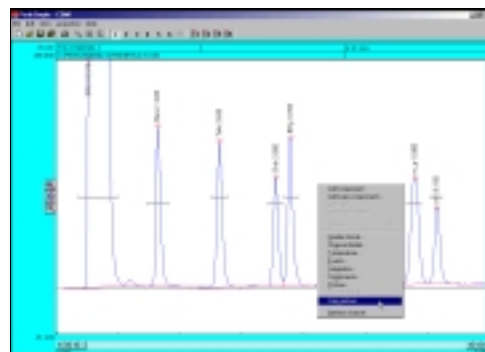
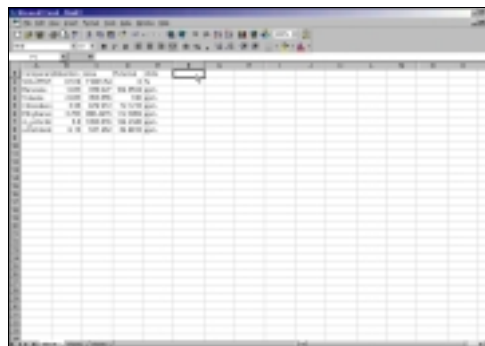


6. Once Excel is opened select **Edit** from the Excel menu bar and then **Paste** from the drop down menu. The results data is now placed into the columns and rows of Excel. Using the mouse cursor, select a box to the right of the results data in the Excel spreadsheet. Go back into the PeakSimple for Windows NT program and hit **Close** to exit the Results window.
7. Right click with the mouse cursor anywhere on chromatogram 602.CHR and select **Copy picture** from the resulting menu. Go back into Excel and select **Edit** from the Excel menu bar and then **Paste** from the drop down menu. The PeakSimple chromatogram will now be displayed next to its results data in the rows and columns of Microsoft Excel.



This concludes the PeakSimple 2000 Basic Tutorial

An Advanced Tutorial can be obtained by going to:  
[www.srigc.com](http://www.srigc.com) online

If you have questions or would like to place an order call:  
(310) 214-5092