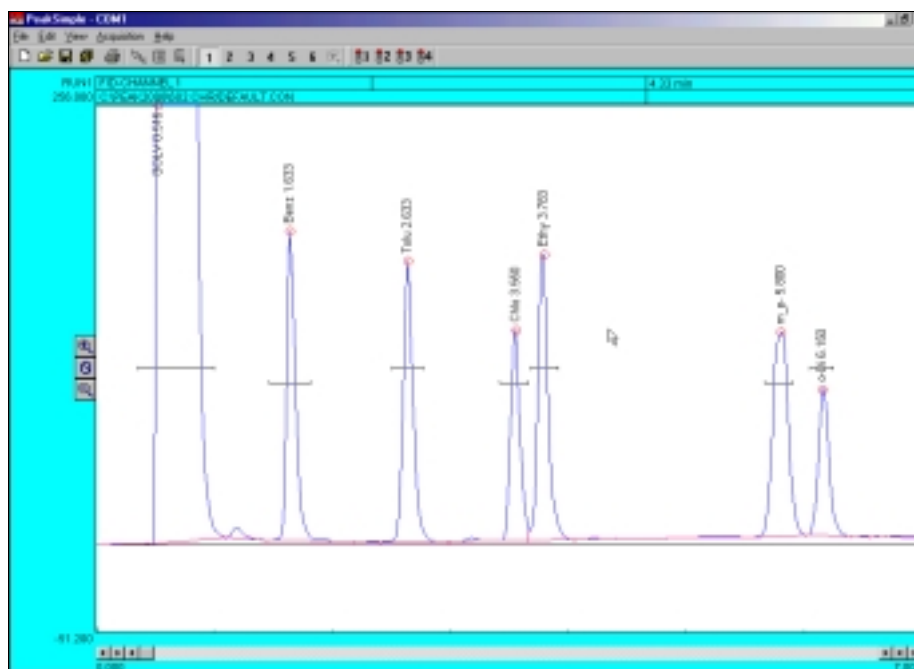


# PeakSimple 2000

## Chromatography Integration Software

### Advanced Tutorial



#### Installing PeakSimple 2000 from floppy disk or CD-Rom

- Start the Windows operating system in use on your computer. (Windows 95, 98, ME, 2000)
- Insert the PeakSimple 2000 disk or CD into your disk drive.
- Go to the **Start** menu in the bottom left hand corner of the windows screen and select **Run** from the set of icons.
- From the run menu, type **X:\setup** (where **X** is the letter of your computers disk drive).
- Now click on the **Continue** button with your mouse cursor or press the enter key on your keyboard to begin installation.
- To complete installation follow the onscreen instructions during the installation wizard.

#### Installing PeakSimple 2000 from software download

- Start the Windows operating system and use an online browser to access [www.srigc.com](http://www.srigc.com).
- From the menu on the left hand side of the screen select **Download our Software** and then download PeakSimple 2000 from the following page.
- Save the file to a temporary folder and then double click on it from My Computer to allow the program to self-extract.
- Once all the files have been extracted successfully double-click the install file and press the **Continue** button when prompted.
- Follow the onscreen instructions to complete the installation of PeakSimple.

**SRI Instruments** 20720 Earl Street Torrance, CA 90503 U.S.A  
 Telephone: (310) 214-5092 Fax: (310) 214-5097 [sales@srigc.com](mailto:sales@srigc.com) [www.srigc.com](http://www.srigc.com)