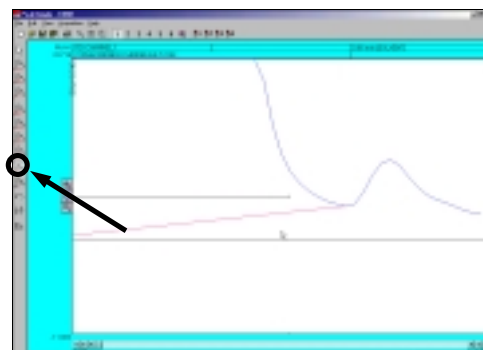
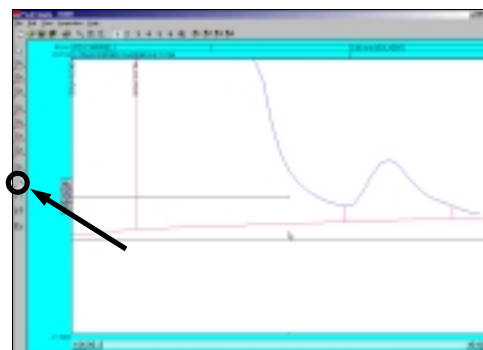


9. The Inhibit tool ends the baseline after a valley effectively inhibiting a peak's area from being counted with the rest of the chromatogram. To use the Inhibit integration tool select the **Inhibit** tool button from the manual integration toolbar and click on the valley of the Solvent peak and the smaller peak to its right.



10. The Rubber Band tool is used to manually draw the baseline in a chromatogram. To use the Rubber Band tool first scroll the X-axis scrollbar all the way to the left to **0.000**. Select the **Rubber Band** tool from the manual integration toolbar and draw a line from the valley between the Solvent peak and the small peak to its left to the valley between the smaller peak to the right of the Solvent peak and the peak to its right.



11. To undo a change made to the baseline of a chromatogram with the manual integration tools use the Undo button found in the manual integration toolbar. To undo the changes made to the baseline using the Rubber band tool click on the **Undo** button with your mouse cursor. All changes made to the baseline will now be undone.



12. The Reverse tool allows the inverting of a peak in a chromatogram. **Note:** To reverse the orientation of the X-axis in real time go to the Events table. First unzoom off of the Solvent peak and the smaller peak to its right and then select the **Reverse** tool from the manual integration toolbar and click and hold the left mouse button while the area of the chromatogram you want to reverse is dragged over with a black box. Let go of the mouse button when the desired area is selected to reverse the orientation.

