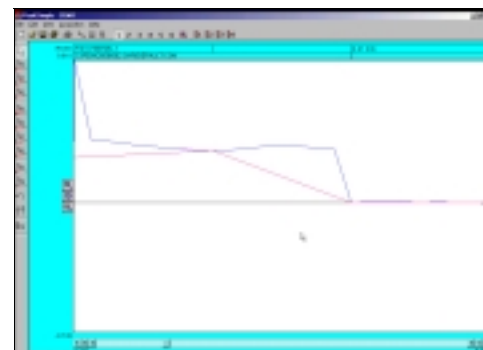
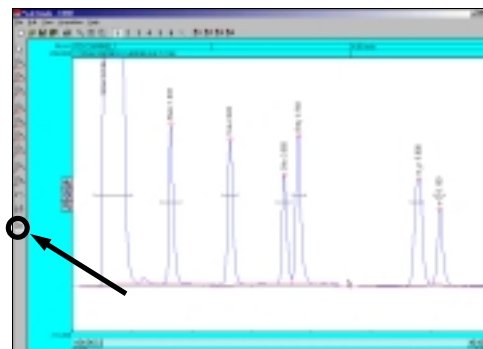


13. The Zero tool is used to set the value of the data line at a selected point and following in the chromatogram to zero. First undo the changes done to the chromatogram by the Reverse tool by reopening 602.CHR in the PeakSimple menu bar. **Note:** Changes made to a chromatogram by the Reverse tool and the Zero tool cannot be undone with the Undo tool. Once the file is reopened click on the **Zero** tool and click anywhere on the baseline between the Ethylbenzene peak and the two peaks to its right with the mouse cursor to set the data line at zero.



## Creating Component Tables

1. To create a component table from scratch open up a second channel in the PeakSimple window by clicking on the Display Channel 2 button in the PeakSimple toolbar. Once the second channel is open click on **File** and then **Open** to get to the Load chromatogram file window. Select file **FID602.CHR** from the list of files and select the Channel 2 radio button to open the file in channel 2. Click **OK** with the mouse cursor to load the file.
2. In channel 2 locate the second tall peak from the left and right click on it with the mouse cursor. From the resulting menu select **Add component** to add a retention window bar to the peak. Once again right click on the peak and select **Edit component** from the menu to open up the Component details window.

