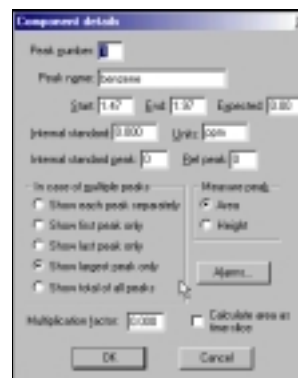
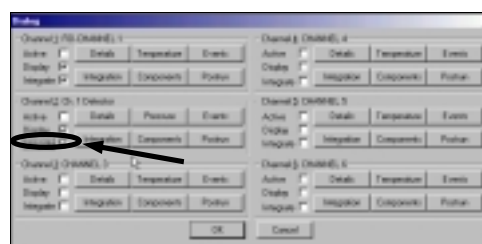
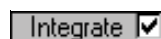


- Once the Component details window is open locate the Peak number dialogue box and add the number **1**. Immediately underneath the Peak number box is the Peak name dialogue box. In the Peak name dialogue box input **benzene** to name it. Locate the Units box and put **ppm** to make the units parts per million. Locate the In case of multiple peaks options box and select the radio button for **Show largest peak only**. Click on **OK** with the mouse cursor to close the window.



- Go to **Edit** in the PeakSimple menu bar and then **Channels** from the resulting menu. The Channel controls window is now open. Locate the Channel 2 options box and the Integrate checkbox. Check the **Integrate** checkbox and then click on **OK** with the mouse cursor to close the window. The peak in the second channel should now identify itself as benzene.



- Locate the large peak to the right of the benzene peak in the second channel. Right click and then select **Add component** to add a retention window bar to the peak. Right click again and go to **Edit component** to open up the Component details window. Change the Peak number to **2**, the Peak name to **toluene**, the Units to **ppm**, and the In case of multiple peaks options box to **Show largest peak only**. Click on **OK** with the mouse cursor to exit the window.

