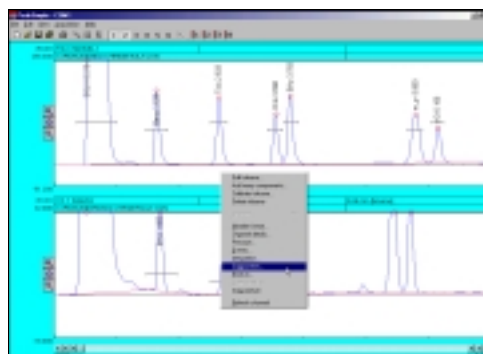


- Right click anywhere on the second channel and select **Components** from the list of options. Once the Channel 2 components window is open make sure all the data is correct and then click on **Save** to save the Component data to disk. Name the file **Ctable** and then click on **OK** to close the window. An unlimited number of component windows may be added to the component table.



Temperature Programming

- To modify the temperature programming in PeakSimple first open chromatogram 602.CHR and then right click anywhere on the chromatogram. From the drop down menu select **Temperature** to open up the Temperature control window.
- In the Temperature control window click using the mouse cursor on the set of numbers in the box and select **Change** from the group of buttons below. The Temperature segment details window will open allowing the modification of the temperature programming. Locate the Hold for dialogue box and insert a **2** in the box. Click on **OK** to close the window and go back into the Temperature control window.

