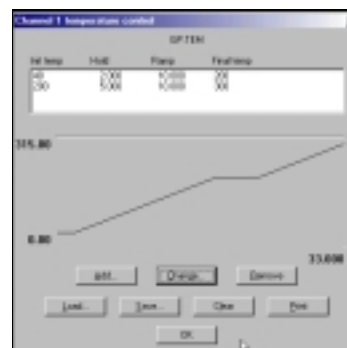
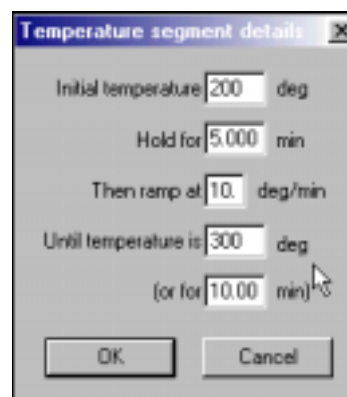
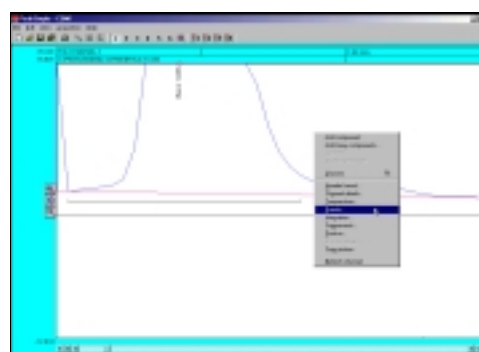


3. Select the **Add** button from the Temperature control window to open up the Temperature segment details window once again. Leave the Initial temperature at 200 and insert a **1** in the Hold for dialogue box. Change the Then ramp at dialogue box to **5** and the Until temperature is box to **250**. Click on **OK** to close the window and to see the new temperature data added to the temperature box. Click on **OK** to close the window.



## Events Table

1. To modify up the Events table in PeakSimple open up chromatogram 602.CHR and zoom in on the benzene peak, the smaller peak to its right, and the baseline. Right click anywhere on the chromatogram and select **Events** from the drop down menu. Doing this will open up the Events window where specific events can be added to the chromatogram.



2. Click using the mouse cursor on the **Add** button to view the Event details window. A list of event types are available with their radio buttons to either select or deselect the event.

**Note:** The event types to the left of the window are real-time and thus will only affect the chromatogram when A/D hardware is connected. The event types to the right are concerned only with integration and their changes will be immediately evident after returning to the main screen and selecting **Reintegrate** from the **Edit** menu bar.

