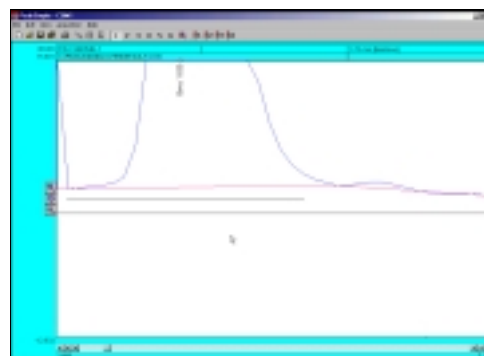


3. In the Event details window locate and select the relay **G** radio button with the mouse cursor and then locate the Event time dialogue box and enter **.1** in the box. Click on **OK** to exit the window. **Note:** The relay might be used to actuate a valve when hardware is connected. The event type will now be added to the Events table. Select the **Add** button and now locate and select the **Zero** event type radio button. Leave the Event time box at 0.000 and once again click on **OK** to exit the window and add the event to the Events table. **Note:** The Zero event auto-zeros the detector signal at the beginning of the run. Click on the **Add** button again and select the **Integration-Based immediate** radio button in the Event details window and input **1.86** in the Event time dialogue box. Select **OK** to exit the window.



4. There are now three events in the Events table. Click on **OK** to exit the Events window and then hit the **Enter** button on the keyboard to reintegrate the baseline according to the events in the Events table. Notice that the baseline is connected to the data line at 1.86 minutes.



## Overlay and Subtract

1. To overlay one PeakSimple chromatogram on top of another chromatogram open up a second channel in the main screen and load chromatogram 602.CHR in the first channel and chromatogram FID602.CHR in the second channel. Right click anywhere in the first channel and select **Channel details** from the drop down menu.
2. In the Channel 1 details window locate the Overlay data in channel checkbox and check it and then input a **2** in the dialogue box to the right. The chromatogram in channel 2 is now overlaid on top of the chromatogram in channel 1. The overlay appears in a different color.

