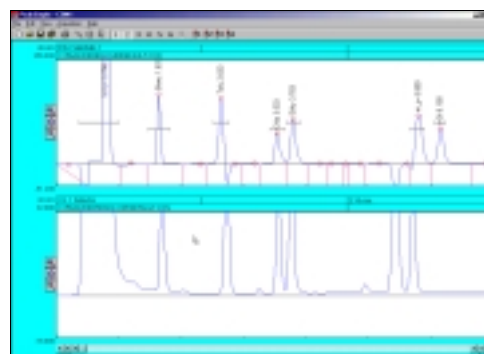
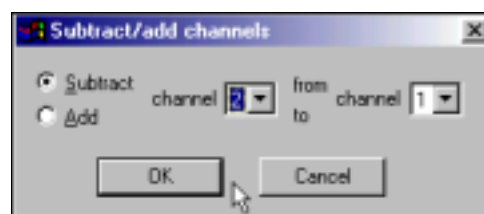
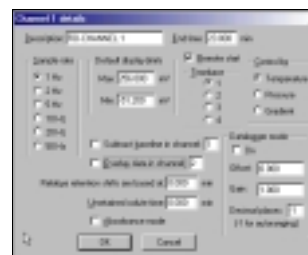
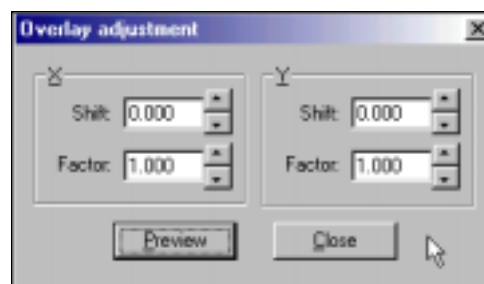


- Right click anywhere on the first channel and select **Overlay adjustment** from the drop down menu. In the Overlay adjustment window locate the Factor scroll box in the X box. Experiment scrolling the X factor up or down to shift the overlaid chromatogram to its right or left. Locate the Factor scroll box in the Y box and experiment scrolling the Y factor up or down to move the overlaid chromatogram up or down. Click on the **Close** button to close the window.
- To subtract a chromatogram in one channel from another channel, right click using the mouse cursor on channel 1 and select **Channel details**. From the Channel 1 details window deselect the Overlay data in channel checkbox and then click on the **OK** button to exit the window.
- Go to the **Edit** menu bar and select **Subtract/Add channels** from the drop down menu. In the Subtract/add channels window make sure the Subtract radio button is selected and that channel 2 is being taken from channel 1. Click on the **OK** button to make the changes take effect and have channel 2 subtracted from channel 1. The normal way to use this feature is to subtract a drifting baseline from a chromatogram.



Results Log

- Open chromatogram 602.CHR in the PeakSimple main screen and then select the **Results** button from the PeakSimple toolbar. In the Results window click on the **Clear results log** button at the bottom of the window. Click on **Yes** from the resulting window to clear the results.
- Locate the **Add to results log** button and click on it three times to add the results on the screen to the Results log three times. Click on the **Show results log** button to view the results log in the Windows Notepad. Exit the Windows Notepad program by selecting **File** from the menu bar and then **Exit**.



Clear results log

