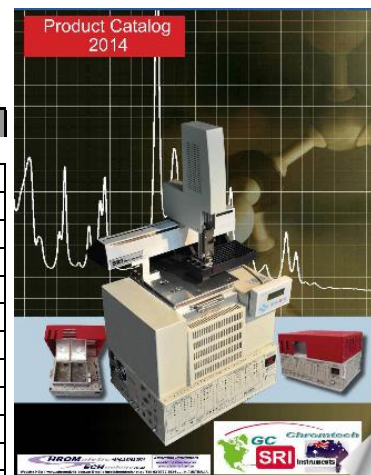


SRIGC PRODUCTS LIST 2014

Product Catalog
2014



MFR PART NO	MFR PART NO	PRODUCT NAME AND DESCRIPTION
GAS CHROMATOGRAPH	0110-0003	110 CHASSIS, 115V
	0110-0003-2	110 CHASSIS, 230V
	0310-1003	310 GC MAINFRAME, 1 CHANNEL USB 2.0 CHASSIS, 115V
	0310-1003-2	310 GC MAINFRAME, 1 CHANNEL USB 2.0 CHASSIS, 230V
	0310-6003	310 GC MAINFRAME, 6 CHANNEL USB CHASSIS, 115V
	0310-6003-2	310 GC MAINFRAME, 6 CHANNEL USB CHASSIS, 230V
	0410-1000	410 RACK GC MAINFRAME, 1 CHANNEL USB 2.0 CHASSIS, 115V
	0410-1000-2	410 RACK GC MAINFRAME, 1 CHANNEL USB 2.0 CHASSIS, 230V
	0410-6000	410 RACK GC MAINFRAME, 6 CHANNEL USB CHASSIS, 115V
	0410-6000-2	410 RACK GC MAINFRAME, 6 CHANNEL USB CHASSIS, 230V
	8610-1003	8610C GC MAINFRAME, 1 CHANNEL USB 2.0 CHASSIS, 115V
	8610-1003-2	8610C GC MAINFRAME, 1 CHANNEL USB 2.0 CHASSIS, 230V
	8610-2003	8610V GC MAINFRAME, 1 CHANNEL USB 2.0 CHASSIS, 115V (VERTICAL INJ.)
	8610-2003-2	8610V GC MAINFRAME, 1 CHANNEL USB 2.0 CHASSIS, 230V (VERTICAL INJ.)
	8610-6003	8610C GC MAINFRAME, 6 CHANNEL USB CHASSIS, 115V
	8610-6003-2	8610C GC MAINFRAME, 6 CHANNEL USB CHASSIS, 230V
	8610-1004	8610D GC MAINFRAME w/ DUAL COLUMN OVENS, 1 CH USB 2.0, 115V
	8610-1004-2	8610D GC MAINFRAME w/ DUAL COLUMN OVENS, 1 CH USB 2.0L, 230V
	8610-6004	8610D GC MAINFRAME w/ DUAL COLUMN OVENS, 6 CH USB, 115V
	8610-6004-2	8610D GC MAINFRAME w/ DUAL COLUMN OVENS, 6 CH USB, 230V
	8610-7003	8610V GC MAINFRAME, 6 CHANNEL USB 2.0 CHASSIS, 115V (VERTICAL INJ.)
	8610-7003-2	8610V GC MAINFRAME, 6 CHANNEL USB 2.0 CHASSIS, 230V (VERTICAL INJ.)

PRECONFIGURED GC SYSTEMS	0110-0100	110 CHASSIS, VOC SCREENING DYNAMIC THERMAL STRIPPER, CCD, 115V
	0110-0100-2	110 CHASSIS, VOC SCREENING DYNAMIC THERMAL STRIPPER, CCD, 230V
	0310-0004	310 EDUCATIONAL FID GC, 115V USB 2.0 CHASSIS
	0310-0045	310 SOIL GAS GC SYSTEM
	0310-1000	310 EDUCATIONAL TCD GC, 115V USB 2.0 CHASSIS
	0310-1006	310 GASLESS EDUCATIONAL CCD GC, USB 2.0 CHASSIS
	0310-1117	310 GASLESS EXPLOSIVES GC, TID
	0410-0065	410 RACK MOUNT MUDLOGGING GC SYSTEM (FID-FID), 115VAC
	0410-0065-2	410 RACK MOUNT MUDLOGGING GC SYSTEM (FID-FID), 230VAC
	8610-0025	8610C METHOD 25 GC (METHANE/NON-METHANE HYDROCARB)
	8610-0035	8610C DGA GC, HID
	8610-0036	8610C DGA GC, TCD - HID
	8610-0040	8610C GREENHOUSE GAS GC SYSTEM
	8610-0050	8610C BTEX GAS CHROMATOGRAPH, METHOD 5030 COMPLIANT
	8610-0051	8610C BTEX GAS CHROMATOGRAPH, METHOD 5030/5035 COMPLIANT
	8610-0059	8610C ENVIRONMENTAL GC (PID-FID/DELCD-P&T)
	8610-0061	8610C GEOPROBE GC (PID-FID/DELCD)
	8610-0062	8610C GEOPROBE GC (FID/DELCD)
	8610-0065	8610C MUDLOGGING GC (FID-FID)
	8610-0066	8610C FAST MUDLOGGING GC, 115VAC
	8610-0070	8610C MULTIPLE GAS GC I (TCD)
	8610-0071	8610C MULTIPLE GAS GC I (TCD-FID-METH)
	8610-0072	8610C MULTIPLE GAS GC I (TCD-HID)
	8610-0073	8610C MULTIPLE GAS GC I + SULFUR ANALYZER
	8610-0080	8610C PCB GC SYSTEM
	8610-0114	8610C METHOD TO-14 AIR MONITORING GC
	8610-0270	8610C MULTIPLE GAS GC II (TCD)
	8610-0271	8610C MULTIPLE GAS GC II (TCD-FID-METH)
	8610-0272	8610C MULTIPLE GAS GC II (TCD-HID)
	8610-0273	8610C MULTIPLE GAS GC II + SULFUR ANALYZER
	8610-0370	8610C MULTIPLE GAS GC III (TCD)
	8610-0371	8610C MULTIPLE GAS GC III (TCD-FID-METH)
	8610-0372	8610C MULTIPLE GAS GC III (TCD-HID)
	8610-0373	8610C MULTIPLE GAS GC III + SULFUR ANALYZER
	8610-1025	8610C EPA METHOD 25 GC, 115VAC
	8610-1117	8610C EXPLOSIVES GC (TID)
	8610-1500	8610C CFC GAS CHROMATOGRAPH WITH TCD
	8610-1510	8610C CFC GAS CHROMATOGRAPH WITH FID
	8610-3070	8610C BTU GAS ANALYZER GC, TCD
	8610-5400	8610C CAPILLARY FID GC
	8610-5405	8610C NARROW BORE CAPILLARY FID GC



SRIGC PRODUCTS LIST 2014

	8610-5500	8610D TUNEABLE COLUMN SELECTIVITY GC
	8610-5675	8610C CRYOSULFUR GC SYSTEM
	8610-5700	8610C SPME GC
	8610-5800	8610C HRVOC GC SYSTEM, 115VAC
	8610-5810	8610C HRVOC GC SYSTEM, 115VAC, ADD PID, 6 CH.
	8610-6584	8610C BIODIESEL GC SYSTEM, ASTM D-6584, 115VAC
	8610-6555	8610C SULFUR IN NATURAL GAS GC SYSTEM, 115VAC
	8610-VUPG	UPGRADE PRECONFIGURED GC MODEL TO VERTICAL CHASSIS 8610V GC

DETECTORS

CCD	0110-2007	CCD MOUNTED ON MODEL 110 CHASSIS
	8670-2007	REPLACEMENT CCD DETECTOR ELEMENT
	8690-2007	CCD DETECTOR

FID-DELCD	8670-0150	FID CERAMIC IGNITOR ELEMENT
	8670-0155	FID COLLECTOR ELECTRODE CABLE WITH BNC CONNECTOR
	8670-1024	FID DETECTOR BODY
	8670-1025	FID DETECTOR BODY FOR METHANIZER
	8670-1029	DELCD HEATER / COLLECTOR ASSEMBLY
	0110-2026	FID-DELCD MOUNTED ON MODEL 110 CHASSIS
	8690-2026	FID-DELCD DETECTOR ASSEMBLY (FID-DELCD)

DELCD	0110-1026	DELCD MOUNTED ON MODEL 110 CHASSIS
	8670-1029	DELCD HEATER / COLLECTOR ASSEMBLY
	8690-1026	DELCD DETECTOR

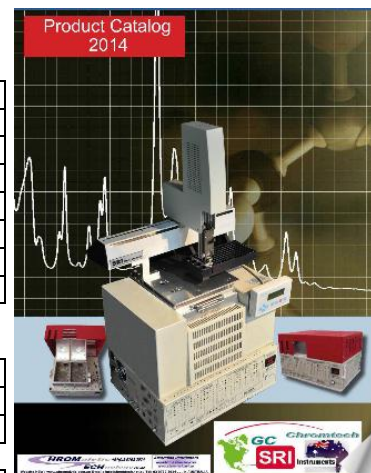
RGD	0110-0009	RGD MOUNTED ON MODEL 110 CHASSIS
	8690-0009	RGD DETECTOR (WITH EMPTY REACTOR)
	8670-0009	REPLACEMENT RGD REACTION TUBE, UNPACKED, WITH FRITS
	8690-0011	BLANK REACTION TUBE W/FRITS

ECD	0110-0020	ECD MOUNTED ON MODEL 110 CHASSIS
	8690-0020	ECD DETECTOR

FID	0110-0010	FID MOUNTED ON MODEL 110 CHASSIS
	0110-1080	FID-FPD MOUNTED ON MODEL 110 CHASSIS
	0110-4010	FID-PID MOUNTED ON MODEL 110 CHASSIS
	0110-2026	FID-DELCD MOUNTED ON 110 CHASSIS
	8670-0150	FID IGNITOR
	8670-0154	FID COLLECTOR ELECTRODE (REPL. 8610C)
	8670-0155	FID COLLECTOR ELECTRODE CABLE (REPL. 8610C)
	8670-1023	FID DETECTOR INLET BULKHEAD FITTING
	8670-1024	FID DETECTOR BODY
	8670-1025	FID DETECTOR BODY FOR METHANIZER
	8690-0010	FID DETECTOR
	8690-0081	METHANIZER ACCESSORY MOUNTED TO EXISTING VALVE OVEN
	8690-0082	METHANIZER ACCESSORY, IN JET
	8670-1081	REPLACEMENT METHANIZER TUBE, 6" x 1/8" S.S.
	8670-1082	REPLACEMENT METHANIZER JET
	8690-1115	FID / NPD CONVERTIBLE DETECTOR
	8690-2026	FID/DELCD DETECTOR
	8690-8294	METHANIZER/OXIDIZER UNIT, FOR METHOD 25-3

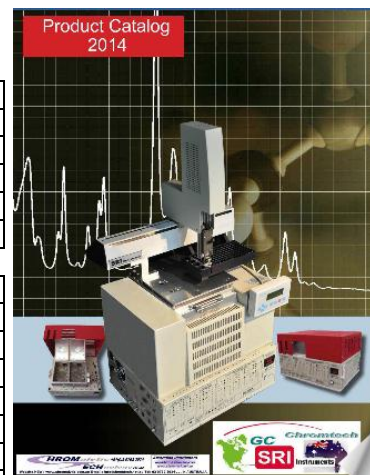
NPD	8670-0120	NPD BEAD (REPLACEMENT ONLY)
	8670-1026	NPD DETECTOR BODY
	0110-0015	NPD MOUNTED ON MODEL 110 CHASSIS
	8690-0015	NPD DETECTOR
	8690-1015	NPD CONVERSION KIT FOR FID
	8690-1115	FID / NPD CONVERTIBLE DETECTOR
	8690-2615	NPD-DELCD SERIES DETECTOR

PID	8670-1240	PID CELL ASSEMBLY
	8670-1242	PID LAMP 10.6eV w/ SEAL, 106-TYPE (SMALL, NEW STYLE)
	8670-1243	PID LAMP 10.2eV w/ SEAL, 103C-TYPE (LARGE, OLD STYLE)
	8670-1244	PID LAMP SEAL, TEFLON®, PACK OF 10
	8670-1245	PID 45VDC BATTERY (REPLACEMENT)
	8670-1246	PID HV POWER SUPPLY TRANSFORMER, 8610 A, B MODEL



SRIGC PRODUCTS LIST 2014

Product Catalog
2014



	8670-1247	PID HV POWER SUPPLY CIRCUIT BOARD, 8610C, 310 MODEL
	8670-1248	PID DETECTOR INLET BULKHEAD FITTING
	0110-0040	PID MOUNTED ON MODEL 110 CHASSIS
	0110-4010	PID-FID MOUNTED ON MODEL 110 CHASSIS
	0110-2426	PID-FID-DELCD MOUNTED ON MODEL 110 CHASSIS
	8690-0040	PID DETECTOR

FPD	0110-0080	FPD MOUNTED ON MODEL 110 CHASSIS
	0110-0085	DFPD MOUNTED ON MODEL 110 CHASSIS
	0110-1080	FPD-FID MOUNTED ON MODEL 110 CHASSIS
	8670-0080	PHOTOMULTIPLIER (PMT) TUBE
	8670-0081	FPD DETECTOR BODY
	8670-0082	SULFUR WAVELENGTH FILTER
	8670-0083	PHOSPHORUS WAVELENGTH FILTER
	8670-0084	FPD FILTER ASSEMBLY WITH BUILT-IN SULFUR FILTER
	8670-0085	FPD FILTER ASSEMBLY WITH BUILT-IN PHOSPHORUS FILTER
	8670-0086	FPD PMT SOCKET ASSEMBLY
	8670-2085	DFPD-FID DETECTOR BODY
	8690-0080	FPD DETECTOR
	8690-0085	SIMULTANEOUS S/P FPD DETECTOR (DFPD)
	8690-1080	FPD-FID DUAL DETECTOR (DUAL ELECTRONICS)
	8690-2085	DFPD-FID DETECTOR (3 AMPLIFIERS)

TCD	8670-0007	TCD CELL w/ FILAMENTS, HEATING ELEMENT, SRI MODEL
	8670-0011	TCD GAIN SWITCH
	8670-9007	UPGRADE TCD TO CURRENT HIGH TEMPERATURE MODEL (HARDWARE ONLY)
	8670-9100	TCD CELL STAINLESS STEEL, GOWMAC-TYPE
	8670-9110	O-RING FOR TCD FILAMENT, EACH (MIN. QTY 10)
	8670-9120	TCD FILAMENT, TUNGSTEN-RHENIUM (SPECIFY COPPER OR VITON SEAL)
	8670-9121	TCD FILAMENT, GOLD PLATED, SET OF FOUR (AuW 13-300)
	8670-9122	O-RING, FOR TCD FILAMENT, PACK OF 10
	8670-9123	NUT, TCD, FILAMENT RETAINING (WAS FILAMENT W/ CU SEAL)
	8670-9124	COPPER SEAL, FOR TCD FILAMENT, PACK OF 10
	8670-9125	TCD FILAMENT PROTECTION CIRCUIT (RETROFIT)
	0110-0007	TCD MOUNTED ON MODEL 110 CHASSIS
	8690-0007	TCD DETECTOR
	8690-0008	TCD DETECTOR, 1 FILAMENT

HID	8670-0030	HID COLLECTOR ELECTRODE ASSEMBLY
	8670-0031	HID DETECTOR BODY
	8690-0030	HID DETECTOR, SRI DESIGN
	0110-0030	HID MOUNTED ON MODEL 110 CHASSIS

TID	8670-0017	TID DETECTOR BEAD
	8670-1017	TID DETECTOR BODY
	8690-0017	TID DETECTOR
	0110-0017	TID MOUNTED ON MODEL 110 CHASSIS

ASD	8690-0006	AROMATIC SELECTIVE DETECTOR
	0110-0006	ASD DETECTOR MOUNTED ON MODEL 110 CHASSIS

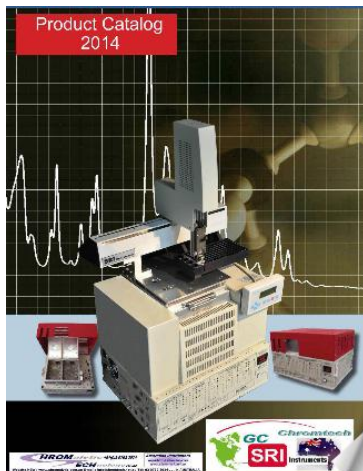
INJECTORS

Autosamplers	8640-0001	LIQUID AUTOSAMPLER, 100 VIAL TRAY, COBRA (VERTICAL, FOR 8610V ONLY)
	8640-0002	MOUNTING BRACKET KIT, FOR VERTICAL AUTOSAMPLER (8610V ONLY)
	8640-0003	SYRINGE, FOR COBRA AUTOSAMPLER, 5 CM. NEEDLE
	8640-0050	AUTOCALIBRATION SYSTEM, GAS
	8640-1006	SINGLE BAY AUTOINJECTOR
	8670-0068	SYRINGE NEEDLE, REPLACEMENT, FOR 42 VIAL LIQUID AUTOSAMPLER
	8670-2368	INJECTION PORT COUPLER TO LIQUID AUTOSAMPLER CAROUSEL
	8690-0068	LIQUID AUTOSAMPLER CAROUSEL, 42 VIAL TRAY
	8690-0053	10 STATION PURGE-AND-TRAP SAMPLE SELECTOR
	8690-0075	ON-LINE LIQUID SAMPLER, FOR P&T
	8690-0087	DGA-TOGA PERMEATION LOOP ACCESSORY
	8690-1068	ON-LINE SYRINGE SAMPLER (NO CAROUSEL)
	8690-2253	10 STATION PURGE-AND-TRAP SAMPLE SELECTOR 220 V

Direct Injection	8670-0024	HEATED INJECTOR BODY
-------------------------	-----------	----------------------



SRIGC PRODUCTS LIST 2014

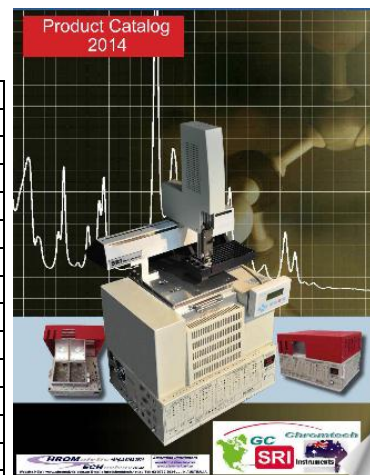


	8670-0025	HEATED INJECTOR HARDWARE, COMPLETE, WITHOUT EPC
	8670-0026	HEATED INJECTION PORT CARRIER INLET
	8670-0034	HEATED SPLIT INJECTOR BODY
	8670-0072	NARROW BORE SPME INJECTOR SLEEVE (FOR HTD. INJ.)
	8670-1034	SILCOSTEEL LINER FOR SPLIT/SPLITLESS INJECTOR
	8670-1353	SILICONE SEPTA, MOLDED PLUG, FOR ON-COLUMN INJECTOR (PACK OF 25)
	8670-1354	SILICONE SEPTA, STAMPED DISK, FOR HEATED INJECTOR (PACK OF 25)
	8670-9090	SEPTUM NUT w/ GUIDE FOR 26GA. NEEDLE
	8670-9093	0.53mm CAPILLARY COLUMN ADAPTER
	8670-9094	INJECTOR BODY
	8670-9095	SEPTUM NUT W/ GUIDE FOR 20GA. NEEDLE
	8670-9096	SEPTUM NUT W/ GUIDE FOR 20GA. NEEDLE, FOR HEATED INJECTOR
	8670-9304	HEATED TRANSFER LINE ADDITION, FOR NEW BUILD GC, RT. SIDE
	8670-9305	HEATED TRANSFER LINE MOD. w/ PLUG
	8670-9550	SYRINGE 10 uL
	8690-0023	ADDITIONAL ON-COLUMN INJECTOR, EPC CIRCUIT
	8690-0025	HEATED INJECTION PORT UPGRADE
	8690-0034	SPLIT/SPLITLESS INJECTOR UPGRADE, AUTO. VENT
	8690-0035	GAS PHASE SPLITTER
	8690-0037	ON-COLUMN PTV INJECTOR UPGRADE
	8690-0045	HEATED STATIC HEADSPACE INJECTOR
	8690-0046	HEATED STATIC HEADSPACE INJECTOR UPGRADE, TO EXISTING VALVE, VALVE OVEN
	8690-2022	ADDITIONAL EPC CONTROL ZONE (NO INJECTOR)
	8690-2023	ADDITIONAL INJECTION PORT WITHOUT EPC CONTROL/CARRIER
	8690-7034	HEATED SPLIT/SPLITLESS INJECTOR UPGRADE WITH PTV
	8690-8034	HEATED SPLIT/SPLITLESS INJECTOR UPGRADE WITH PTV, VALVE
PURGE & TRAP	8670-1173	NEEDLE, 115 MM, FOR METHOD 5035 SPARGE HEAD
	8670-1174	NEEDLE, 50 MM, FOR METHOD 5035 SPARGE HEAD
	8670-1300	BLANK TRAP
	8670-1305	TENAX GR TRAP
	8670-1315	CARBOSIEVE II TRAP
	8670-1320	CARBOPACK B TRAP
	8670-1324	POLISHING FILTER, 3"
	8670-1330	TEFLON TEST TUBE SEALS (1 PAIR), FOR P&T
	8670-1335	SPARGE TEST TUBES (10 PACK)
	8670-1350	PURGE & TRAP SPARGING HEAD w/ GAS INJ. PORT
	8670-1351	SPARGE HEAD, 5030 INTERCHANGEABLE, REPLACEMENT
	8670-1352	SPARGE HEAD, 5035 INTERCHANGEABLE, REPLACEMENT
	8670-1450	TRAP HEATER ASSEMBLY WITH T-COUPLE
	8670-5052	UPGRADE METHOD 5030 P&T TO 5035 COMPLIANT (NEW BUILD ONLY)
	8670-5860	ONLINE SAMPLER / SPARGER FOR HRVOC GC
	8670-9556	1/16" S.S. TUBE FOR P&T SPARGE GAS
	8680-0052	METHOD 5035 COMPLIANT VOA VIAL SPARGE ACCESSORY
	8690-0051	AUTOMATED PURGE AND TRAP CONCENTRATOR, METHOD 5030
	8690-0052	AUTOMATED PURGE AND TRAP CONCENTRATOR, METHOD 5030/35
	8690-0053	10 SAMPLE PURGE AND TRAP AUTOSAMPLER, w/4 RELAY BD
	8690-0054	10 SAMPLE METHOD 5035 PURGE-AND-TRAP SAMPLER
	8690-0064	4 PORT LIQUID SAMPLING VALVE, MANUAL ACTUATOR
	8690-0075	ON-LINE LIQUID SAMPLER FOR PURGE-AND-TRAP
	8690-0084	HEATED / FAST COOLING ADSORBENT TRAP FOR EXISTING GAS VALVE
	8690-0086	PELTIER CRYOCOOLING w/ ELECTRONICS FOR TRAP
	8690-0090	PELTIER CRYOCOOLING TRAP, FOR GAS SAMPLING VALVE
	8690-0097	TRAP PACKING ACCESSORY
	8690-1051	METHOD TO-14 AIR CONCENTRATOR, VAC PUMP, 1 TRAP
	8690-1052	METHOD TO-14 AIR CONCENTRATOR, 2 TRAP, w/TUBE DESORBER
	8690-1055	METHOD TO-14 AIR CONCENTRATOR, VAC PUMP, 2 TRAPS
	8690-1084	HEATED/FAST COOLING 1/4" TRAP, FOR EXISTING GAS SAMPLING VALVE
	8690-2084	DUAL HEATED TRAPS FOR EXISTING GAS VALVES
	8690-2253	10 STATION PURGE-AND-TRAP AUTOSAMPLER 230V, 4 REL BD
	8690-5052	UPGRADE 5030 P&T TO METHOD 5030/5035 COMPLIANT (NEW BUILD ONLY)
THERMAL DESORBERS	8670-0062	VALCO T ROTOR HIGH TEMP.
	8670-1501	DESORBER BULKHEAD
	8670-1502	GAS DELIVERY LINE WITH CONNECTOR, THERMAL DESORBER
	8670-1590	3/8" GRAPHITE FERRULE FOR TSD (EACH)
	8690-1087	THERMAL DESORBER SAMPLE TUBE (PK. OF 10)



SRIGC PRODUCTS LIST 2014

Product Catalog
2014



	8690-1088	THERMAL SOIL DESORBER, MANUAL ACTUATOR
VALVES	8670-0060	VALCO E ROTOR MID TEMP.
	8670-0061	VALCO P ROTOR LOW TEMP.
	8670-0062	VALCO T ROTOR HIGH TEMP.
	8670-0063	10 PORT VALVE HEAD, GAS SAMPLING
	8670-0064	ELECTRIC VALVE ACTUATOR, FOR 10 PORT GAS SAMPLING VALVE
	8670-0066	CIRCUIT BOARD KIT, FOR ELECTRIC ACTUATOR, 115VAC
	8670-8000	SAMPLE LOOP (SPECIFY VOLUME BETWEEN 0.5mL and 3.0mL)
	8690-0060	10 PORT GAS SAMPLING VALVE, MULTIGAS 3 PLUMBING, WITH SOLENOID
	8690-0061	10 PORT GAS SAMPLING VALVE, PNEUMATIC ACTUATOR
	8690-0062	4 PORT LIQUID SAMPLING VALVE, ELECTRIC ACTUATOR
	8690-0063	10 PORT GAS SAMPLING VALVE, MANUAL ACTUATOR
	8690-0064	4 PORT LIQUID SAMPLING VALVE, MANUAL ACTUATOR
	8690-0065	10 PORT GAS SAMPLING VALVE, ELECTRIC ACTUATOR
	8690-0066	10 INPUT HEATED STREAM SELECTOR W/ TRANSFER LINE
	8690-0067	BLOCK HEATER w/ CARTRIDGE FOR GAS VALVE
	8690-0069	SOLENOID-CONTROLLED GAS VALVE
	8690-0072	SPLIT VENT VALVE
	8690-0073	VACUUM PUMP INTERFACE, DATA SYSTEM CONTROLLED
	8690-0074	THERMOSTATTED VALVE OVEN, HIGH TEMP. (300°C MAX.)
	8690-0077	22 PORT, 10 STREAM SELECTOR VALVE, AUTOMATED, STD. ALONE
	8690-0078	22 PORT, 10 STREAM SELECTOR VALVE, ELECTRIC ACTUATOR, PLUMBED
	8690-0079	22 PORT, 10 STREAM SELECTOR VALVE, ELECTRIC ACTUATOR, UNPLUMBED
	8690-0083	CRYOTRAP LOOP, AUTOMATED CONTROL
	8690-0084	HEATED / FAST COOLING TRAP AND PLUMBING
	8690-0087	DGA-TOGA PERMEATION LOOP ACCESSORY
	8690-0088	THERMOSTATTED VALVE OVEN
	8690-0089	UNHEATED INSULATED VALVE OVEN
	8690-0091	THERMOSTATTED VALVE OVEN, NARROW, FOR 8610D GC

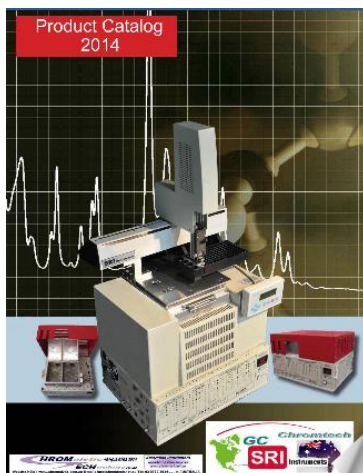
INJECTOR ACCESSORIES	8670-0025	HEATED INJECTOR HARDWARE, COMPLETE, WITHOUT EPC
	8690-0075	ON-LINE LIQUID SAMPLER
	8670-2368	INJECTION PORT COUPLER TO LIQUID AUTOSAMPLER CAROUSEL
	8670-8000	SAMPLE LOOP (0.5 to 3.0cc, SPECIFY)

DATA SYSTEMS	8600-9000	DATA SYSTEM HOST NOTEBOOK PC w/ PTR.
	8600-9010	DATA SYSTEM HOST DESKTOP PC w/ PTR.
	8600-9050	MULTIMEDIA DATA SYSTEM HOST DESKTOP PC W/ PTR.
USB DATA SYSTEM	8600-1050	PEAKSIMPLE 1 CH. USB DATA SYSTEM KIT, 115VAC, MODEL 333
	8600-1051	4 RELAY KIT FOR MODEL 333
	8600-1250	PEAKSIMPLE 1 CH. USB DATA SYSTEM KIT, 230VAC, MODEL 333
	8600-4060	4 RELAY BOARD FOR GC RETROFIT SERIAL INTERFACE, 8610C
	8600-4061	4 RELAY BOARD FOR GC RETROFIT, WITH EXTERNAL JACK (CURRENT 8610C)
	8600-5655	1 CH. DATA SYSTEM WITH H2 / HC SENSOR INSTALLED
	8600-6055	PEAKSIMPLE 6 CH. USB DATA SYSTEM KIT, 115V MODEL 302
	8600-6056	AC SWITCHED OUTLET FOR USB DATA SYSTEM
	8600-6255	PEAKSIMPLE 6 CH. USB DATA SYSTEM KIT, 230V MODEL 302
	8660-4653	UPGRADE 4 CH. DATA SYSTEM TO 6 CH. USB VERSION (IN EXISTING GC/LC)
	8660-6053	UPGRADE 1 CH. DATA SYSTEM TO 6 CH. USB VERSION (IN EXISTING GC/LC)
	8660-6055	UPGRADE 1 CH. USB DATA SYSTEM TO 6 CH. USB VERSION (IN NEW GC/LC)
	8670-0232	SERIAL CABLE, RS-232 (DB-9 CONNECTORS), 6'
	8670-1052	64 BIT WINDOWS 7 COMPATIBLE PIC CHIP FOR EARLY MODEL 333
	8670-1058	POWER SUPPLY FOR MODEL 333, 115VAC TO 15VDC
	8670-1058-2	POWER SUPPLY FOR MODEL 333, 230VAC TO 15VDC
	8670-USB2	USB 2.0 A TO B CABLE, 6'

PACKED COLUMNS	8600-PK1A	3' x 1/8" S.S. SILICA GEL PACKED COLUMN
	8600-PK1B	6' x 1/8" S.S. SILICA GEL PACKED COLUMN
	8600-PK2A	3' x 1/8" S.S. MOLECULAR SIEVE 5A PACKED COLUMN
	8600-PK2B	6' x 1/8" S.S. MOLECULAR SIEVE 5A PACKED COLUMN
	8600-PK3A	3' x 1/8" S.S. MOLECULAR SIEVE 13X PACKED COLUMN
	8600-PK3B	6' x 1/8" S.S. MOLECULAR SIEVE 13X PACKED COLUMN
	8600-PKC3	CTR3 DOUBLE PACKED COLUMN, FOR ARGON
	8600-PKC4	CTR1 DOUBLE PACKED COLUMN
	8600-PKC5	24' x 1/8" S.S. AT-1000/CARBOPACK B CFC PACKED COLUMN



SRIGC PRODUCTS LIST 2014



	8600-PKDA	3' x 1/8" S.S. HAYESEP D PACKED COLUMN
	8600-PKDB	6' x 1/8" S.S. HAYESEP D PACKED COLUMN
	8600-PKQA	3' x 1/8" S.S. PORAPAK Q PACKED COLUMN
	8600-PKQA-T	3' x 1/8" TEFLON® PORAPAK Q PACKED COLUMN
	8600-PKQB	6' x 1/8" S.S. PORAPAK Q PACKED COLUMN
	8600-PKQB-T	6' x 1/8" TEFLON® PORAPAK Q PACKED COLUMN
	8600-PKSC	6' x 1/8" S.S. SHINCARBON ST 80/100 PACKED COLUMN (2M)
	8600-PKTA	3' x 1/8" S.S. HAYESEP T PACKED COLUMN
	8600-PKTB	6' x 1/8" S.S. HAYESEP T PACKED COLUMN

CAPILLARY COLUMNS	8600-WB1A	15M x 0.53MM I.D. 5.0U MXT-1 CAPILLARY COLUMN (DB-1 NON-POLAR)
	8600-WB1B	30M x 0.53MM I.D. 5.0U MXT-1 CAPILLARY COLUMN
	8600-WB1C	60M x 0.53MM I.D. 5.0U MXT-1 CAPILLARY COLUMN
	8600-WB5A	15M x 0.53MM I.D. 1.0U MXT-5 CAPILLARY COLUMN (DB-5 MED. POLARITY)
	8600-WB5B	30M x 0.53MM I.D. 1.0U MXT-5 CAPILLARY COLUMN
	8600-WB5C	60M x 0.53MM I.D. 1.0U MXT-5 CAPILLARY COLUMN
	8600-WBBD	15M x 0.53MM I.D. 0.15U MXT-500 CAPILLARY COLUMN (FOR GLYC. IN BIODIESEL)
	8600-WBBG	15M x 0.53MM I.D. 1.0U MXT-BIODIESEL CAPILLARY COLUMN
	8600-WBVA	15M x 0.53MM I.D. 5.0U MXT-VOL CAPILLARY COLUMN (FOR VOLATILES)
	8600-WBVB	30M x 0.53MM I.D. 5.0U MXT-VOL CAPILLARY COLUMN
	8600-WBVC	60M x 0.53MM I.D. 5.0U MXT-VOL CAPILLARY COLUMN
	8600-WBXA	15M x 0.53MM I.D. 1.0U MXT-WAX CAPILLARY COLUMN (POLAR)
	8600-WBXB	30M x 0.53MM I.D. 1.0U MXT-WAX CAPILLARY COLUMN
	8600-WBXC	60M x 0.53MM I.D. 1.0U MXT-WAX CAPILLARY COLUMN
	8600-WQPA	15M x 0.53MM I.D. 20.0U RT-QPLOT CAPILLARY COLUMN
	8600-WQPB	30M x 0.53MM I.D. 20.0U RT-QPLOT CAPILLARY COLUMN

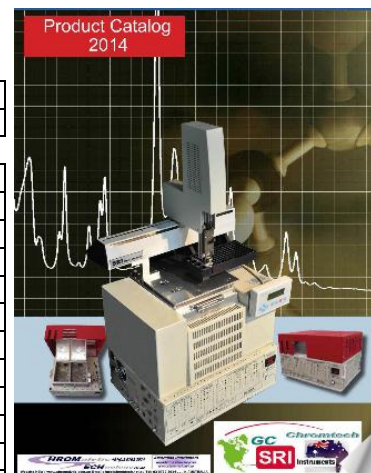
ACCESSORIES	0510-0081	METHANIZER ACCESSORY, FOR NON-SRI GC / AFTERMARKET, 90-240 VAC
	8600-C346	GAS LINE INSTALLATION KIT CGA346
	8600-C350	GAS LINE INSTALLATION KIT CGA350
	8600-C380	GAS LINE INSTALLATION KIT CGA380
	8600-C580	GAS LINE INSTALLATION KIT CGA580
	8600-C590	GAS LINE INSTALLATION KIT CGA590
	8600-MAIN	GC MAINTENANCE KIT, SPECIFY 8610C OR 310, 115V OR 230V
	8660-0060	FAST MUDLOGGER MODIFICATION
	8660-0082	METHANIZER RETROFIT KIT, IN JET VERSION
	8670-1081	METHANIZER TUBE REPLACEMENT- 6" x 1/8"
	8670-1082	METHANIZER TUBE REPLACEMENT- 2" x 1/8" - FOR NEW 8610C GC
	8670-1083	METHANIZER TUBE, IN JET, UNPACKED
	8670-1122	VOLTAGE TRANSFORMER, STEP UP/STEP DOWN, 115VAC-230VAC
	8670-1340	OXYGEN TRAP FILTER
	8670-1341	HYDROCARBON TRAP FILTER
	8670-3500	AUTOSAMPLER MOUNTING SYSTEM, FOR HTA
	8670-5850	SAMPLE STREAM DRYER
	8670-9008	MAINTENANCE KIT, HYDROGEN GENERATOR (MINUS CELL)
	8670-9304	HEATED TRANSFER LINE ADDITION, FOR NEW BUILD GC, RT. SIDE
	8670-9305	HEATED TRANSFER LINE MOD. w/ PLUG
	8670-9554	SRI TUBING CUTTER FOR COPPER TUBING
	8680-0052	METHOD 5035 COMPLIANT VOA VIAL SPARGE ACCESSORY
	8680-0352	SPARE DESSICANT CANISTER
	8680-5050	HOT WAND ACCESSORY, ADJUSTABLE, 115V
	8690-0070	INTERNAL WHISPER-QUIET AIR COMPRESSOR, 115V
	8690-0071	PERISTALTIC PUMP, REPLACEMENT
	8690-0073	VACUUM PUMP INTERFACE, AUTOMATED
	8690-0081	METHANIZER ACCESSORY BUILT ONTO EXISTING VALVE OVEN
	8690-0082	METHANIZER ACCESSORY, IN JET
	8690-0086	PELTIER COOLING WITH ELECTRONICS, FOR EXISTING TRAP
	8690-0087	DGA-TOGA PERMEATION LOOP ACCESSORY
	8690-0090	PELTIER COOLED TRAP, FOR GAS SAMPLING VALVE
	8690-0092	ENRICHMENT COIL ACCESSORY
	8690-0093	ONLINE MEMBRANE SAMPLER W/ SPARGER FOR COOLING TOWER WATER
	8690-0094	OXIDIZER ACCESSORY
	8690-0095	REUSEABLE SHIPPING CONTAINER
	8690-2270	INTERNAL WHISPER-QUIET AIR COMPRESSOR, 230V
	8690-5510	DIGITAL MULTIMETER, GENERAL PURPOSE
	8690-5600	H2 / HC LEAK DETECTOR, AC POWERED, WITH DIGITAL VOLTMETER
	8690-5655	H2 / HC LEAK DETECTOR, BUILT INTO 1 CH. DATA SYSTEM



SRIGC PRODUCTS LIST 2014

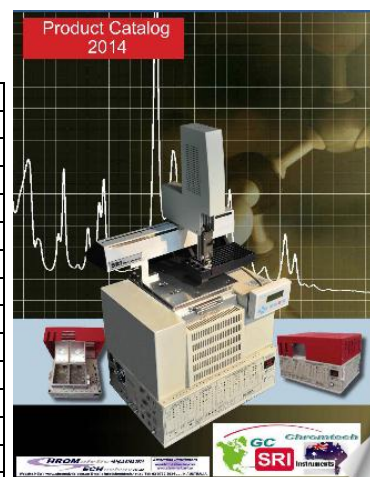
	8690-9305	HEATED TRANSFER LINE WITH THERMOCOUPLE, 115VAC
	8690-LPGH	LPG HEATED EXPANSION CHAMBER / HOMOGENIZER

PARTS	8660-6055	UPGRADE 1 CHANNEL DATA SYSTEM TO 6 CHANNEL VERSION (IN NEW GC)
	8670-CB02	CIRCUIT BREAKER, 2 A (115VAC)
	8670-CB05	CIRCUIT BREAKER, 5 A (230VAC)
	8670-CB10	CIRCUIT BREAKER, 10A (115VAC)
	8670-GRE1	GRAPHITE ELECTRODE ROPE, WITH CONNECTORS, FOR HYDROGEN GENERATOR
	8670-KBF1	KYNAR BAR FITTING, WATER, FOR HYDROGEN GENERATOR (REPLACES NYLON)
	8670-0007	TCD CELL w/ FILAMENTS, HEATING ELEMENT, SRI MODEL
	8670-0011	TCD GAIN SWITCH
	8670-0017	TID DETECTOR BEAD
	8670-0025	HEATED INJECTOR HARDWARE, COMPLETE, WITHOUT EPC
	8670-0026	HEATED INJECTION PORT CARRIER INLET
	8670-0030	HID COLLECTOR ELECTRODE ASSEMBLY
	8670-0031	HID DETECTOR BODY
	8670-0034	HEATED SPLIT INJECTOR BODY
	8670-0060	VALCO E ROTOR MID TEMP.
	8670-0061	VALCO P ROTOR LOW TEMP.
	8670-0062	VALCO T ROTOR HIGH TEMP.
	8670-0063	10 PORT VALVE HEAD, GAS SAMPLING
	8670-0064	ELECTRIC VALVE ACTUATOR, FOR 10 PORT GAS SAMPLING VALVE
	8670-0066	CIRCUIT BOARD KIT, FOR ELECTRIC ACTUATOR, 115VAC
	8670-0068	SYRINGE NEEDLE, REPLACEMENT, FOR LIQUID AUTOSAMPLER
	8670-0070	AIR COMPRESSOR, REPLACEMENT, 115VAC
	8670-0071	PERISTALTIC PUMP TUBING, REPLACEMENT
	8670-0072	NARROW BORE SPME INJECTOR SLEEVE (FOR HTD. INJ.)
	8670-0073	VACUUM PUMP INTERFACE, SELF INSTALL KIT
	8670-0074	VACUUM PUMP, REPLACEMENT
	8670-0080	PHOTOMULTIPLIER (PMT) TUBE
	8670-0081	FPD DETECTOR BODY
	8670-0082	SULPHUR WAVELENGTH FILTER
	8670-0083	PHOSPHORUS WAVELENGTH FILTER
	8670-0084	FPD FILTER ASSEMBLY WITH BUILT-IN SULFUR FILTER
	8670-0085	FPD FILTER ASSEMBLY WITH BUILT-IN PHOSPHORUS FILTER
	8670-0086	FPD PMT SOCKET ASSEMBLY
	8670-0120	NPD BEAD (REPLACEMENT ONLY)
	8670-0150	FID IGNITOR / ELCD HEATER
	8670-0154	FID COLLECTOR ELECTRODE (REPL. 8610C)
	8670-0155	FID COLLECTOR ELECTRODE CABLE (REPL. 8610C)
	8670-0232	SERIAL CABLE, RS-232 (DB-9 CONNECTORS), 6'
	8670-0353	CELL, HYDROGEN GENERATOR, REPLACEMENT (NEW)
	8670-0354	CELL, HYDROGEN GENERATOR, REPLACEMENT (REBUILT)
	8670-0355	H2-40 SAFETY UPGRADE KIT
	8670-0356	H2-50 SAFETY UPGRADE KIT
	8670-0357	GLASS CYLINDER REPLACEMENT KIT, FOR H2 GENERATOR
	8670-0651	FAN MOTOR KIT, 8610C (SPECIFY 115VAC OR 230VAC)
	8670-0655	FAN MOTOR AND BLADE, 310/410 (SPECIFY 115VAC OR 230VAC)
	8670-1024	FID DETECTOR BODY
	8670-1025	FID DETECTOR BODY FOR METHANIZER
	8670-1026	NPD DETECTOR BODY
	8670-1028	DELCD COOLING FAN, FOR RED LID
	8670-1029	DELCD HEATER / COLLECTOR ASSEMBLY
	8670-1034	SILCOSTEEL LINER FOR SPLIT/SPLITLESS INJECTOR
	8670-1052	64 BIT WINDOWS 7 COMPATIBLE PIC CHIP FOR EARLY MODEL 333
	8670-1081	METHANIZER TUBE REPLACEMENT- 6" x 1/8"
	8670-1082	METHANIZER IN-JET TUBE REPLACEMENT- 2" x 1/8"
	8670-1083	METHANIZER TUBE, IN JET, UNPACKED
	8670-1084	HEATED/FAST COOLING 1/4" TRAP, FOR EXISTING GAS SAMPLING VALVE
	8670-114A	DIFFERENTIAL AMPLIFIER IC, INA114AP
	8670-117P	DIFFERENTIAL AMPLIFIER IC, INA117P
	8670-1351	SPARGE HEAD, 5030 INTERCHANGEABLE, REPLACEMENT
	8670-1352	SPARGE HEAD, 5035 INTERCHANGEABLE, REPLACEMENT
	8670-1353	SILICONE SEPTA, MOLDED PLUG, FOR ON-COLUMN INJECTOR (PACK OF 25)
	8670-1354	SILICONE SEPTA, STAMPED DISK, FOR HEATED INJECTOR (PACK OF 25)
	8670-1357	PORTER PRESSURE REGULATOR w/ SENSOR
	8670-1400	OVEN HEATER / SOCKET SET, 110 OR 230V



SRIGC PRODUCTS LIST 2014

Product Catalog
2014



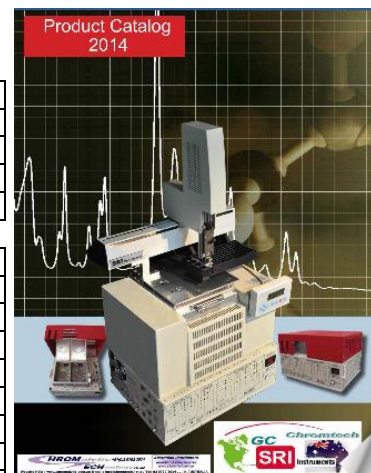
8670-1401	OVEN HEATER ELEMENT, 8610A/B/9300A, REPLACEMENT
8670-1402	OVEN HEATER SOCKET FOR 8610A, B, 9300A GC's
8670-1403	OVEN HEATER ELEMENT FOR 8610C GC, 115V
8670-1404	OVEN HEATER ELEMENT FOR 8610C GC, 230V
8670-1405	OVEN HEATER ELEMENT FOR 310 GC, 230V
8670-1406	OVEN HEATER ELEMENT FOR 310 GC, 115V
8670-1410	CARTRIDGE HEATER, 100W, 1/4"x1 5/16", FOR DET. BLOCK, METH. (115V OR 230V)
8670-1411	CARTRIDGE HEATER, 100W, 3/8"x2 3/4", FOR ECD HEATER BLOCK (115V OR 230V)
8670-1412	CARTRIDGE HEATER, 40W, 1/4"x1 1/4", FOR 5030 P&T SAMPLER (115V OR 230V)
8670-1413	CARTRIDGE HEATER, 40W, 1/4"x1 1/4", FOR HID HEATER BLOCK (24VDC)
8670-1414	CARTRIDGE HEATER, 50W, 1/4"x1 1/4", FOR 510 METHANIZER HEATER (12VDC)
8670-1415	CARTRIDGE HEATER, 150W, 3/8"x2", FOR THERMAL DESORBER (115V OR 230V)
8670-1416	CARTRIDGE HEATER, 200W, 1/4"x1 1/2", FOR PELTIER, BIOD. DET. BLK. (115V OR 230V)
8670-1418	1/4" TO 1/8" VESPEL REDUCING FERRULE, PACK OF 10
8670-1419	1/4" TO 1/8" TEFLON® REDUCING FERRULE, PACK OF 10
8670-1450	TRAP HEATER ASSEMBLY WITH T-COUPLE
8670-1460	TYPE K THERMOCOUPLE, 36"
8670-1506	1/16" S.S. FERRULE SET, PACK OF 10
8670-1590	3/8" GRAPHITE FERRULE FOR TSD
8670-1800	1/8" BRASS NUT, PACK OF 10
8670-1806	1/8" S.S. FERRULE SET, PACK OF 10
8670-1814	1/4" TO 1/8" REDUCING FITTING, FOR CTR COLUMN, ETC.
8670-1815	1/4" TO 1/8" REDUCING FITTING, WITH 1/16" GAS LINE ENTRY
8670-1818	1/8" GRAPHITE STRAIGHT FERRULE, PACK OF 10
8670-1853	GRAPHITE REDUCING FERRULE, 1/8" - 0.8mm, PACK OF 10
8670-1855	1/4" GRAPHITE STRAIGHT FERRULE, PACK OF 10
8670-1828	GRAPHITE REDUCING FERRULE, 1/8" - 0.5MM, PACK OF 10
8670-2085	DFFD-FID DETECTOR BODY
8670-2270	AIR COMPRESSOR, REPLACEMENT, 230VAC
8670-2368	INJECTION PORT COUPLER TO LIQUID AUTOSAMPLER CAROUSEL
8670-5600	PROBE, REPLACEMENT, FOR HC/H2 LEAK DETECTOR
8670-6000	DIGITAL FLOW CONTROLLER
8670-6020	PRESSURE SENSOR WITH CONNECTOR FOR EPC
8670-6021	TANK PRES. REGULATOR w/ CGA FITTING
8670-6022	NORGREN GAS PRESSURE REGULATOR
8670-6023	NORGREN PRESSURE REGULATOR w/ SENSOR
8670-6024	WATTS GAS PRESSURE REGULATOR
8670-6025	WATTS PRESSURE REGULATOR w/ SENSOR
8670-6026	GAUGE FOR REGULATOR
8670-6500	OVEN CIRCULATING FAN w/ SQUIREL CAGE
8670-6550	GREY OVEN COOLING FAN, WITH COOLING FAN MUFFIN
8670-6554	HEATSINK FAN
8670-6575	CHASSIS FAN, 24VDC, FOR 8610C/310
8670-6576	CHASSIS FAN, 115VAC, FOR 8610C/310
8670-6600	COLUMN OVEN LID, 8610B
8670-9001	GC MAINTENANCE KIT, 8610C 115V
8670-9002	GC MAINTENANCE KIT, 8610C 230V
8670-9003	GC MAINTENANCE KIT, 8610B 115V
8670-9004	GC MAINTENANCE KIT, 8610B 230V
8670-9005	GC MAINTENANCE KIT, 310 115V
8670-9006	GC MAINTENANCE KIT, 310 230V
8670-9093	0.53mm CAPILLARY COLUMN ADAPTER
8670-9304	HEATED TRANSFER LINE ADDITION, FOR NEW BUILD GC, RT. SIDE
8670-9305	HEATED TRANSFER LINE MOD. w/ PLUG
8670-9555	TUBING COPPER 1/8", 50' ROLL
8670-USB2	USB 2.0 A TO B CABLE, 6'
8690-0064	4 PORT LIQUID SAMPLING VALVE, MANUAL ACTUATOR
8690-0071	PERISTALTIC PUMP, REPLACEMENT
8690-0072	SPLIT VENT VALVE
8690-0073	VACUUM PUMP INTERFACE, DATA SYSTEM CONTROLLED
8690-0081	METHANIZER ACCESSORY BUILT ONTO EXISTING VALVE OVEN
8690-0082	METHANIZER ACCESSORY, IN JET
8690-0086	PELTIER COOLING w/ ELECTRONICS FOR TRAP
8690-0090	PELTIER COOLED TRAP, FOR GAS SAMPLING VALVE
8690-0095	REUSEABLE SHIPPING CONTAINER
8690-0096	DGA-TOGA EXTRACTOR ASSEMBLY
8690-0151	NAFION MEMBRANE REPLACEMENT FOR HYDROGEN GEN.



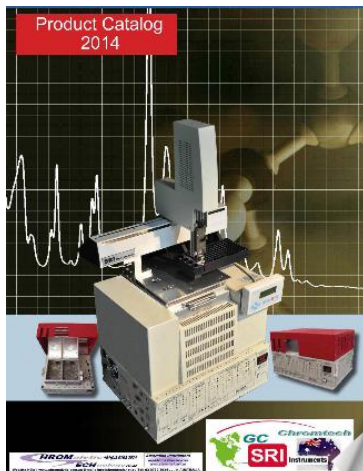
SRIGC PRODUCTS LIST 2014

	8690-0152	NAFION TUBING, DRYER, FOR HYDROGEN GENERATOR
	8690-0153	WATER FILTER, FOR HYDROGEN GENERATOR
	8690-1070	REPLACEMENT AIR FILTER
	8690-7000	OP-AMP CHIP, LF356 (REPLACES OP-80A)
	8690-7100	SCR - TRIAC CIRCUIT BOARD

PRODUCT LIST	0110-0003	110 CHASSIS, 115V
	0110-0003-2	110 CHASSIS, 230V
	0110-0006	ASD MOUNTED ON MODEL 110 CHASSIS
	0110-0007	TCD MOUNTED ON MODEL 110 CHASSIS
	0110-0009	RGD MOUNTED ON MODEL 110 CHASSIS
	0110-0010	FID MOUNTED ON MODEL 110 CHASSIS
	0110-0015	NPD MOUNTED ON MODEL 110 CHASSIS
	0110-0017	TID MOUNTED ON MODEL 110 CHASSIS
	0110-0020	ECD MOUNTED ON MODEL 110 CHASSIS
	0110-0030	HID MOUNTED ON MODEL 110 CHASSIS
	0110-0040	PID MOUNTED ON MODEL 110 CHASSIS
	0110-0080	FPD MOUNTED ON MODEL 110 CHASSIS
	0110-0085	SIMULTANEOUS S/P FPD MOUNTED ON MODEL 110 CHASSIS
	0110-0100	110 CHASSIS, DYNAMIC THERMAL STRIPPER
	0110-1026	DELCD MOUNTED ON MODEL 110 CHASSIS
	0110-1080	FPD-FID MOUNTED ON MODEL 110 CHASSIS
	0110-2007	CCD MOUNTED ON MODEL 110 CHASSIS
	0110-2026	FID-DELCD MOUNTED ON MODEL 110 CHASSIS
	0110-2426	PID-FID-DELCD MOUNTED ON MODEL 110 CHASSIS
	0110-4010	PID-FID MOUNTED ON MODEL 110 CHASSIS
	0310-0004	310 EDUCATIONAL FID GC, USB 2.0 CHASSIS, 115V
	0310-0045	310 SOIL GAS GC SYSTEM
	0310-1000	310 EDUCATIONAL TCD GC, USB 2.0 CHASSIS, 115V
	0310-1003	310 GC MAINFRAME, 1 CHANNEL USB 2.0 CHASSIS, 115V
	0310-1003-2	310 GC MAINFRAME, 1 CHANNEL USB 2.0 CHASSIS, 230V
	0310-1006	310 GASLESS EDUCATIONAL CCD GC, SERIAL CHASSIS, 115V
	0310-1007	310 GASLESS INDOOR AIR QUALITY GC (CCD)
	0310-1008	310 GASLESS INDOOR AIR QUALITY GC (CCD-PID)
	0310-1117	310 GASLESS EXPLOSIVES GC, TID
	0310-6003	310 GC MAINFRAME, 6 CHANNEL USB CHASSIS, 115V
	0310-6003-2	310 GC MAINFRAME, 6 CHANNEL USB CHASSIS, 230V
	0410-0065	410 RACK MOUNT MUDLOGGING GC SYSTEM (FID-FID)
	0410-0065-2	410 RACK MOUNT MUDLOGGING GC SYSTEM (FID-FID)
	0410-1000	410 RACK GC MAINFRAME, 1 CHANNEL USB 2.0 CHASSIS, 115V
	0410-1000-2	410 RACK GC MAINFRAME, 1 CHANNEL USB 2.0 CHASSIS, 230V
	0410-6000	410 RACK GC MAINFRAME, 6 CHANNEL USB CHASSIS, 115V
	0410-6000-2	410 RACK GC MAINFRAME, 6 CHANNEL USB CHASSIS, 230V
	0510-0081	METHANIZER ACCESSORY FOR NON-SRI GC / AFTERMARKET, 90-240 VAC
	0510-1081	REPLACEMENT METHANIZER TUBE FOR MODEL 510
	8600-1050	PEAKSIMPLE 1 CH. USB DATA SYSTEM KIT, 115VAC, MODEL 333
	8600-1051	4 RELAY KIT FOR MODEL 333
	8600-1250	PEAKSIMPLE 1 CH. USB DATA SYSTEM KIT, 230VAC, MODEL 333
	8600-2022	SINGLE-GAS EPC OPTION FOR MODEL 333 UNITS
	8600-4060	4 RELAY BOARD FOR GC RETROFIT, 8610C/310
	8600-4061	4 RELAY BOARD FOR GC RETROFIT, WITH EXTERNAL JACK (CURRENT 8610C)
	8600-5655	1 CH. DATA SYSTEM WITH H ₂ / HC SENSOR INSTALLED
	8660-6053	UPGRADE 1 CH. DATA SYSTEM TO 6 CH. USB VERSION (IN EXISTING GC/LC)
	8600-6055	PEAKSIMPLE 6 CH. USB DATA SYSTEM KIT, 115V MODEL 302
	8600-6056	SWITCHED AC OUTLET FOR USB DATA SYSTEM
	8600-6255	PEAKSIMPLE 6 CH. USB DATA SYSTEM KIT, 230V MODEL 302
	8600-9000	DATA SYSTEM HOST NOTEBOOK PC w/ PTR.
	8600-9010	DATA SYSTEM HOST DESKTOP PC w/ PTR.
	8600-9050	MULTIMEDIA DATA SYSTEM HOST DESKTOP PC W/ PTR.
	8600-C346	GAS LINE INSTALLATION KIT CGA346
	8600-C350	GAS LINE INSTALLATION KIT CGA350
	8600-C380	GAS LINE INSTALLATION KIT CGA380
	8600-C580	GAS LINE INSTALLATION KIT CGA580
	8600-C590	GAS LINE INSTALLATION KIT CGA590
	8600-PK1A	3' x 1/8" S.S. SILICA GEL PACKED COLUMN
	8600-PK1B	6' x 1/8" S.S. SILICA GEL PACKED COLUMN
	8600-PK2A	3' x 1/8" S.S. MOLECULAR SIEVE 5A PACKED COLUMN



SRIGC PRODUCTS LIST 2014

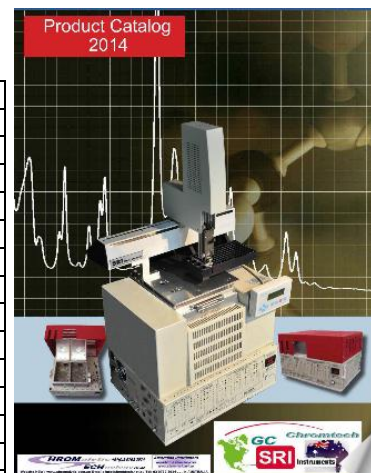


8600-PK2B	6' x 1/8" S.S. MOLECULAR SIEVE 5A PACKED COLUMN
8600-PK3A	3' x 1/8" S.S. MOLECULAR SIEVE 13X PACKED COLUMN
8600-PK3B	6' x 1/8" S.S. MOLECULAR SIEVE 13X PACKED COLUMN
8600-PKC3	CTR3 DOUBLE PACKED COLUMN, FOR ARGON
8600-PKC4	CTR1 DOUBLE PACKED COLUMN
8600-PKC5	24' x 1/8" S.S. AT-1000/CARBOPACK B CFC PACKED COLUMN
8600-PKDA	3' x 1/8" S.S. HAYESEP D PACKED COLUMN
8600-PKDB	6' x 1/8" S.S. HAYESEP D PACKED COLUMN
8600-PKQA	3' x 1/8" S.S. PORAPAK Q PACKED COLUMN
8600-PKQA-T	3' x 1/8" TEFLON® PORAPAK Q PACKED COLUMN
8600-PKQB	6' x 1/8" S.S. PORAPAK Q PACKED COLUMN
8600-PKQB-T	6' x 1/8" TEFLON® PORAPAK Q PACKED COLUMN
8600-PKSC	6' x 1/8" S.S. SHINCARBON ST 80/100 PACKED COLUMN (2M)
8600-PKTA	3' x 1/8" S.S. HAYESEP T PACKED COLUMN
8600-PKTB	6' x 1/8" S.S. HAYESEP T PACKED COLUMN
8600-WB1A	15M x 0.53MM I.D. 5.0U MXT-1 CAPILLARY COLUMN (DB-1 NON-POLAR)
8600-WB1B	30M x 0.53MM I.D. 5.0U MXT-1 CAPILLARY COLUMN
8600-WB1C	60M x 0.53MM I.D. 5.0U MXT-1 CAPILLARY COLUMN
8600-WB5A	15M x 0.53MM I.D. 1.0U MXT-5 CAPILLARY COLUMN (DB-5 MED. POLARITY)
8600-WB5B	30M x 0.53MM I.D. 1.0U MXT-5 CAPILLARY COLUMN
8600-WB5C	60M x 0.53MM I.D. 1.0U MXT-5 CAPILLARY COLUMN
8600-WBBD	15M x 0.53MM I.D. 0.15U MXT-500 CAPILLARY COLUMN (FOR GLYC. IN BIODIESEL)
8600-WBBG	15M x 0.53MM I.D. MXT-BIODIESEL CAPILLARY COLUMN
8600-WBVA	15M x 0.53MM I.D. 5.0U MXT-VOL CAPILLARY COLUMN (FOR VOLATILES)
8600-WBVB	30M x 0.53MM I.D. 5.0U MXT-VOL CAPILLARY COLUMN
8600-WBVC	60M x 0.53MM I.D. 5.0U MXT-VOL CAPILLARY COLUMN
8600-WBXA	15M x 0.53MM I.D. 1.0U MXT-WAX CAPILLARY COLUMN (POLAR)
8600-WBXB	30M x 0.53MM I.D. 1.0U MXT-WAX CAPILLARY COLUMN
8600-WBXC	60M x 0.53MM I.D. 1.0U MXT-WAX CAPILLARY COLUMN
8600-WQPA	15M x 0.53MM I.D. 20.0U RT-QPLOT CAPILLARY COLUMN (19741)
8600-WQPB	30M x 0.53MM I.D. 20.0U RT-QPLOT CAPILLARY COLUMN (19742)
8610-0025	8610C METHOD 25 GC (CH4/NON-CH4 HC)
8610-0035	8610C DGA GC SYSTEM, HID
8610-0036	8610C DGA GC SYSTEM, TCD - HID
8610-0040	8610C GREENHOUSE GAS GC SYSTEM
8610-0050	8610C BTEX GAS CHROMATOGRAPH, METHOD 5030 COMPLIANT
8610-0051	8610C BTEX GAS CHROMATOGRAPH, METHOD 5030/5035 COMPLIANT
8610-0059	8610C ENVIRONMENTAL GC (PID-FID/DELCD-P&T)
8610-0061	8610C GEOPROBE GC (PID-FID/DELCD)
8610-0062	8610C GEOPROBE GC (FID/DELCD)
8610-0065	8610C MUDLOGGING GC (FID-FID)
8610-0066	8610C FAST MUDLOGGING GC, 115VAC
8610-0070	8610C MULTIPLE GAS ANALYZER GC - TCD
8610-0071	8610C MULTIPLE GAS ANALYZER TCD FID METH
8610-0072	8610C MULTIPLE GAS ANALYZER TCD HID
8610-0073	8610C MULTIPLE GAS + SULFUR ANALYZER
8610-0080	8610C PCB GC SYSTEM
8610-0114	8610C METHOD TO-14 AIR MONITORING GC
8610-0270	8610C MULTIPLE GAS GC II (TCD)
8610-0271	8610C MULTIPLE GAS GC II (TCD-FID-METH)
8610-0272	8610C MULTIPLE GAS GC II (TCD-HID)
8610-0273	8610C MULTIPLE GAS GC II + SULFUR ANALYZER
8610-0370	8610C MULTIPLE GAS GC III (TCD)
8610-0371	8610C MULTIPLE GAS GC III (TCD-FID-METH)
8610-0372	8610C MULTIPLE GAS GC III (TCD-HID)
8610-0373	8610C MULTIPLE GAS GC III + SULFUR ANALYZER
8610-1003	8610C GC MAINFRAME, 1 CHANNEL USB 2.0 CHASSIS, 115V
8610-1003-2	8610C GC MAINFRAME, 1 CHANNEL USB 2.0 CHASSIS, 230V
8610-1025	EPA METHOD 25 GC, 115V
8610-1117	8610C EXPLOSIVES GC (TID)
8610-1500	8610C CFC GAS CHROMATOGRAPH WITH TCD
8610-1510	8610C CFC GAS CHROMATOGRAPH WITH FID
8610-2003	8610V GC MAINFRAME, 1 CHANNEL USB 2.0 CHASSIS, 115V (VERTICAL INJ.)
8610-2003-2	8610V GC MAINFRAME, 1 CHANNEL USB 2.0 CHASSIS, 230V (VERTICAL INJ.)
8610-3070	8610C BTU GAS ANALYZER GC, TCD
8610-5400	8610C CAPILLARY FID GC
8610-5405	8610C NARROW BORE CAPILLARY FID GC



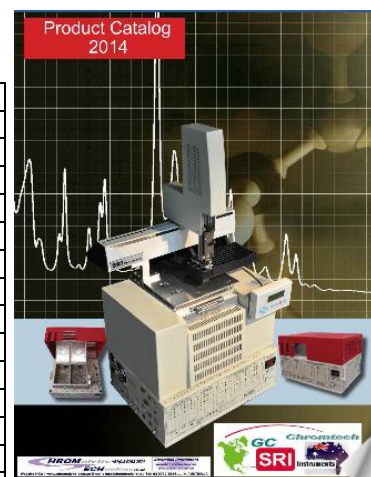
SRIGC PRODUCTS LIST 2014

8610-5500	8610D TUNEABLE COLUMN SELECTIVITY GC
8610-5675	8610C CRYOSULFUR GC SYSTEM
8610-5700	8610C SPME GC
8610-5800	8610C HRVOC GC SYSTEM, 115VAC
8610-5810	8610C HRVOC GC SYSTEM, 115VAC, ADD PID, 6 CH.
8610-6003	8610C GC MAINFRAME, 6 CHANNEL USB CHASSIS, 115V
8610-6003-2	8610C GC MAINFRAME, 6 CHANNEL USB CHASSIS, 230V
8610-6004	8610D GC MAINFRAME w/ DUAL COLUMN OVENS, 6 CH USB, 115V
8610-6004-2	8610D GC MAINFRAME w/ DUAL COLUMN OVENS, 6 CH USB, 230V
8610-6584	8610C BIODIESEL GC SYSTEM, ASTM D-6584, 115VAC
8610-6555	SULFUR IN NATURAL GAS GC SYSTEM, 115VAC
8610-7003	8610V GC MAINFRAME, 6 CHANNEL USB 2.0 CHASSIS, 115V (VERTICAL INJ.)
8610-7003-2	8610V GC MAINFRAME, 6 CHANNEL USB 2.0 CHASSIS, 230V (VERTICAL INJ.)
8610-VUPG	UPGRADE PRECONFIGURED GC MODEL TO VERTICAL CHASSIS 8610V GC
8640-0001	LIQUID AUTOSAMPLER, 100 VIAL TRAY, COBRA (VERTICAL, FOR 8610V ONLY)
8640-0002	MOUNTING BRACKET KIT, FOR VERTICAL AUTOSAMPLER (8610V ONLY)
8640-0003	SYRINGE, FOR COBRA AUTOSAMPLER, 5 CM. NEEDLE
8640-0050	AUTOCALIBRATION SYSTEM, GAS
8640-1006	SINGLE BAY AUTOINJECTOR
8660-0060	FAST MUDLOGGER MODIFICATION
8660-0082	METHANIZER RETROFIT KIT, IN JET VERSION
8660-6053	UPGRADE 1 CH. DATA SYSTEM TO 6 CH. USB VERSION (IN EXISTING GC/LC)
8660-6055	UPGRADE 1 CH. USB DATA SYSTEM TO 6 CH. USB VERSION (IN NEW GC/LC)
8670-CB02	CIRCUIT BREAKER, 2 A (115VAC)
8670-CB05	CIRCUIT BREAKER, 5 A (230VAC)
8670-CB10	CIRCUIT BREAKER, 10 A (115VAC)
8670-GRE1	GRAPHITE ELECTRODE ROPE, WITH CONNECTORS, FOR HYDROGEN GENERATOR
8670-KBF1	KYNAR BAR FITTING, WATER, FOR HYDROGEN GENERATOR (REPLACES NYLON)
8670-USB2	USB 2.0 A TO B CABLE, 6'
8670-0007	TCD CELL w/ FILAMENTS, HEATING ELEMENT, SRI MODEL
8670-0009	REPLACEMENT RGD REACTION TUBE, UNPACKED, WITH FRITS
8670-0011	TCD GAIN SWITCH
8670-0017	TID DETECTOR BEAD
8670-0024	HEATED INJECTOR BODY
8670-0025	HEATED INJECTOR HARDWARE, COMPLETE, WITHOUT EPC
8670-0026	HEATED INJECTION PORT CARRIER INLET
8670-0030	HID COLLECTOR ELECTRODE ASSEMBLY
8670-0031	HID DETECTOR BODY
8670-0034	HEATED SPLIT INJECTOR BODY
8670-0060	VALCO E ROTOR MID TEMP.
8670-0061	VALCO P ROTOR LOW TEMP.
8670-0062	VALCO T ROTOR HIGH TEMP.
8670-0063	10 PORT VALVE HEAD, GAS SAMPLING
8670-0064	ELECTRIC VALVE ACTUATOR, FOR 10 PORT GAS SAMPLING VALVE
8670-0066	CIRCUIT BOARD KIT, FOR ELECTRIC ACTUATOR, 115VAC
8670-0068	SYRINGE NEEDLE, REPLACEMENT, FOR LIQUID AUTOSAMPLER
8670-0070	AIR COMPRESSOR, REPLACEMENT, 115VAC
8670-0071	PERISTALTIC PUMP TUBING, REPLACEMENT
8670-0072	NARROW BORE SPME INJECTOR SLEEVE (FOR HTD. INJ.)
8670-0073	VACUUM PUMP INTERFACE, SELF INSTALL KIT
8670-0074	VACUUM PUMP, REPLACEMENT
8670-0080	PHOTOMULTIPLIER (PMT) TUBE
8670-0081	FPD DETECTOR BODY
8670-0082	SULPHUR WAVELENGTH FILTER
8670-0083	PHOSPHORUS WAVELENGTH FILTER
8670-0084	FPD FILTER ASSEMBLY WITH BUILT-IN SULFUR FILTER
8670-0085	FPD FILTER ASSEMBLY WITH BUILT-IN PHOSPHORUS FILTER
8670-0120	NPD BEAD (REPLACEMENT ONLY)
8670-0150	FID IGNITOR
8670-0154	FID COLLECTOR ELECTRODE (REPL. 8610C)
8670-0155	FID COLLECTOR ELECTRODE CABLE (REPL. 8610C)
8670-0232	SERIAL CABLE, RS-232 (DB-9 CONNECTORS), 6'
8670-0351	NAFION MEMBRANE REPLACEMENT FOR 50ML HYDROGEN GEN.
8670-0353	CELL, HYDROGEN GENERATOR, REPLACEMENT (NEW)
8670-0354	CELL, HYDROGEN GENERATOR, REPLACEMENT (REBUILT)
8670-0357	GLASS CYLINDER REPLACEMENT KIT, FOR H2 GENERATOR
8670-0651	FAN MOTOR KIT, 8610C (SPECIFY 115VAC OR 230VAC)



SRIGC PRODUCTS LIST 2014

Product Catalog
2014

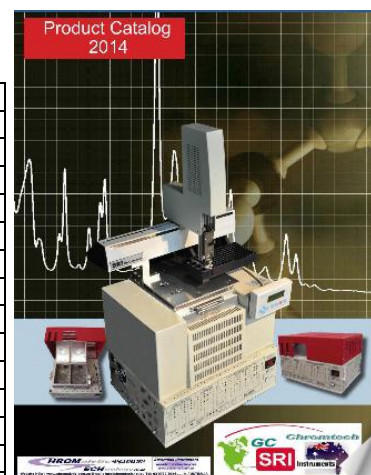


8670-0655	FAN MOTOR KIT, 310/410 (SPECIFY 115VAC OR 230VAC)
8670-6575	CHASSIS FAN, 24VDC, FOR 8610C/310
8670-1017	TID DETECTOR BODY
8670-1023	FID DETECTOR INLET BULKHEAD FITTING
8670-1024	FID DETECTOR BODY
8670-1025	FID DETECTOR BODY FOR METHANIZER
8670-1026	NPD DETECTOR BODY
8670-1028	DELCD COOLING FAN, FOR RED LID
8670-1029	DELCD HEATER / COLLECTOR ASSEMBLY
8670-1034	SILCOSTEEL LINER FOR SPLIT/SPLITLESS INJECTOR
8670-1052	64 BIT WINDOWS 7 COMPATIBLE PIC CHIP FOR EARLY MODEL 333
8670-1058	POWER SUPPLY FOR MODEL 333, 115VAC TO 15VDC
8670-1058-2	POWER SUPPLY FOR MODEL 333, 230VAC TO 15VDC
8670-1081	METHANIZER TUBE REPLACEMENT- 6" x 1/8"
8670-1082	METHANIZER IN-JET TUBE REPLACEMENT - 2" x 1/8"
8670-1083	METHANIZER TUBE, IN JET, UNPACKED
8670-1084	HEATED/FAST COOLING 1/4" TRAP, FOR EXISTING GAS SAMPLING VALVE
8670-1122	VOLTAGE TRANSFORMER, STEP UP/STEP DOWN, 115VAC-230VAC
8670-1173	NEEDLE, 115 MM, FOR METHOD 5035 SPARGE HEAD
8670-1174	NEEDLE, 50 MM, FOR METHOD 5035 SPARGE HEAD
8670-114A	DIFFERENTIAL AMPLIFIER IC, INA114AP
8670-117P	DIFFERENTIAL AMPLIFIER IC, INA117P
8670-1240	PID CELL ASSEMBLY
8670-1242	PID LAMP 10.6eV w/ SEAL, 106-TYPE (SMALL, NEW STYLE)
8670-1243	PID LAMP 10.2eV w/ SEAL, 103C-TYPE (LARGE, OLD STYLE)
8670-1244	PID LAMP SEAL, TEFLON®, PACK OF 10
8670-1245	PID 45VDC BATTERY (REPLACEMENT)
8670-1246	PID HV POWER SUPPLY TRANSFORMER, 8610 A, B MODEL
8670-1247	PID HV POWER SUPPLY CIRCUIT BOARD, 8610C, 310 MODEL
8670-1248	PID DETECTOR INLET BULKHEAD FITTING
8670-1300	BLANK TRAP
8670-1305	TENAX GR TRAP
8670-1315	CARBOSIEVE II TRAP
8670-1320	CARBOPACK B TRAP
8670-1324	POLISHING FILTER, 3"
8670-1330	TEFLON TEST TUBE SEALS (1 PAIR), FOR P&T
8670-1335	SPARGE TEST TUBES (10 PACK)
8670-1340	OXYGEN TRAP FILTER
8670-1341	HYDROCARBON TRAP FILTER
8670-1350	PURGE & TRAP SPARGING HEAD w/ GAS INJ. PORT
8670-1351	SPARGE HEAD, 5030 INTERCHANGEABLE, REPLACEMENT
8670-1352	SPARGE HEAD, 5035 INTERCHANGEABLE, REPLACEMENT
8670-1353	SILICONE SEPTA, MOLDED PLUG, FOR ON-COLUMN INJECTOR (PACK OF 25)
8670-1354	SILICONE SEPTA, STAMPED DISK, FOR HEATED INJECTOR (PACK OF 25)
8670-1356	PORTER GAS PRESSURE REGULATOR & FITTING
8670-1357	PORTER PRESSURE REGULATOR w/ SENSOR
8670-1400	OVEN HEATER / SOCKET SET, 110 or 230V
8670-1401	OVEN HEATER ELEMENT, 8610A/B/9300A, REPLACEMENT
8670-1402	OVEN HEATER SOCKET FOR 8610A, B, 9300A GC's
8670-1403	OVEN HEATER ELEMENT FOR 8610C GC, 115V
8670-1404	OVEN HEATER ELEMENT FOR 8610C GC, 230V
8670-1405	OVEN HEATER ELEMENT FOR 310 GC, 230V
8670-1406	OVEN HEATER ELEMENT FOR 310 GC, 115V
8670-1410	HEATER CARTRIDGE, 100W, 115V, 1/4"x1 5/16", FOR DET. BLOCK, METH. (115V OR 230V)
8670-1411	CARTRIDGE HEATER, 100W, 3/8"x2 3/4", FOR ECD HEATER BLOCK (115V OR 230V)
8670-1412	CARTRIDGE HEATER, 40W, 1/4"x1 1/4", FOR 5030 P&T SAMPLER (115V OR 230V)
8670-1413	CARTRIDGE HEATER, 40W, 1/4"x1 1/4", FOR HID HEATER BLOCK (24VDC)
8670-1414	CARTRIDGE HEATER, 50W, 1/4"x1 1/4", FOR 510 METHANIZER HEATER (12VDC)
8670-1415	CARTRIDGE HEATER, 150W, 3/8"x2", FOR THERMAL DESORBER (115V OR 230V)
8670-1416	CARTRIDGE HEATER, 200W, 1/4"x1 1/2", FOR PELTIER, BIOD. DET. BLK. (115V OR 230V)
8670-1418	1/4" TO 1/8" VESPEL REDUCING FERRULE, PACK OF 10
8670-1419	1/4" TO 1/8" TEFLON® REDUCING FERRULE, PACK OF 10
8670-1450	TRAP HEATER ASSEMBLY WITH T-COUPLE
8670-1460	TYPE K THERMOCOUPLE, 36"
8670-1501	DESORBER BULKHEAD
8670-1502	GAS DELIVERY LINE WITH CONNECTOR, THERMAL DESORBER
8670-1506	1/16" S.S. FERRULE SET, PACK OF 10



SRIGC PRODUCTS LIST 2014

Product Catalog
2014



8670-1590	3/8" GRAPHITE FERRULE FOR TSD (EACH)
8670-1800	1/8" BRASS NUT, PACK OF 10
8670-1801	1/8" BRASS FERRULE SET, PACK OF 10
8670-1805	1/8" S.S. NUT, PACK OF 10
8670-1806	1/8" S.S. FERRULE SET, PACK OF 10
8670-1814	1/4" TO 1/8" REDUCING FITTING, FOR CTR COLUMN, ETC.
8670-1815	1/4" TO 1/8" REDUCING FITTING, WITH 1/16" GAS LINE ENTRY
8670-1818	1/8" GRAPHITE STRAIGHT FERRULES, PACK OF 10
8670-1828	GRAPHITE REDUCING FERRULE, 1/8" - 0.5MM, PACK OF 10
8670-1853	GRAPHITE REDUCING FERRULE, 1/8" - 0.8MM, PACK OF 10
8670-1855	1/4" GRAPHITE STRAIGHT FERRULE, PACK OF 10
8670-2007	REPLACEMENT CCD DETECTOR ELEMENT
8670-2085	DFPD-FID DETECTOR BODY
8670-2270	AIR COMPRESSOR, REPLACEMENT, 230VAC
8670-2368	INJECTION PORT COUPLER TO LIQUID AUTOSAMPLER CAROUSEL
8670-3500	AUTOSAMPLER MOUNTING SYSTEM, FOR HTA
8670-5052	UPGRADE 5030 P&T TO METHOD 5030/5035 COMPLIANT (NEW BUILD ONLY)
8670-5600	PROBE, REPLACEMENT, FOR HC/H2 LEAK DETECTOR
8670-5850	SAMPLE STREAM DRYER
8670-5860	ON-LINE SAMPLER / SPARGER FOR HRVOC
8670-6000	DIGITAL FLOW CONTROLLER
8670-6015	FLUISTOR (EPC MODULE) WITH CONNECTOR, CURRENT 8610C
8670-6016	EPC CIRCUIT BOARD
8670-6020	PRESSURE SENSOR WITH CONNECTOR, FOR EPC
8670-6021	TANK PRES. REGULATOR w/ CGA FITTING
8670-6022	NORGREN GAS PRESSURE REGULATOR
8670-6023	NORGREN PRESSURE REGULATOR w/ SENSOR
8670-6024	WATTS GAS PRESSURE REGULATOR
8670-6025	WATTS PRESSURE REGULATOR w/ SENSOR
8670-6026	GAUGE FOR REGULATOR
8670-6500	OVEN CIRCULATING FAN
8670-6550	GREY OVEN COOLING FAN, WITH COOLING MUFFIN FAN
8670-6554	HEATSINK FAN
8670-6575	CHASSIS FAN, 24VDC, FOR 8610C/310
8670-6576	CHASSIS FAN, 115VAC, FOR 8610C/310
8670-6600	COLUMN OVEN LID, 8610B
8670-8000	SAMPLE LOOP (SPECIFY VOLUME BETWEEN 0.5mL and 3.0mL)
8670-9001	GC MAINTENANCE KIT, 8610C 115V
8670-9002	GC MAINTENANCE KIT, 8610C 220 VAC
8670-9003	GC MAINTENANCE KIT, 8610B 115V
8670-9004	GC MAINTENANCE KIT, 8610B 230V
8670-9005	GC MAINTENANCE KIT, 310 115V
8670-9006	GC MAINTENANCE KIT, 310 230V
8670-9007	UPGRADE TCD TO CURRENT HIGH TEMPERATURE MODEL (HARDWARE ONLY)
8670-9008	MAINTENANCE KIT, HYDROGEN GENERATOR (MINUS CELL)
8670-9010	FID MAINTENANCE KIT
8670-9090	SEPTUM NUT w/ GUIDE FOR 26GA. NEEDLE
8670-9093	0.53mm CAPILLARY COLUMN ADAPTER
8670-9094	INJECTOR BODY
8670-9095	SEPTUM NUT W/ GUIDE FOR 20GA. NEEDLE
8670-9096	SEPTUM NUT W/ GUIDE FOR 20GA. NEEDLE, FOR HEATED INJECTOR
8670-9100	TCD CELL STAINLESS STEEL, GOWMAC-TYPE
8670-9110	O-RING FOR TCD FILAMENT, EACH (MIN. QTY 10)
8670-9120	TCD FILAMENT, TUNGSTEN-RHENIUM (SPECIFY COPPER OR VITON SEAL)
8670-9121	TCD FILAMENT, GOLD PLATED, SET OF FOUR (AuW 13-300)
8670-9122	O-RING, FOR TCD FILAMENT, PACK OF 10
8670-9123	NUT, TCD, FILAMENT RETAINING (WAS FILAMENT W/ CU SEAL)
8670-9124	COPPER SEAL, FOR TCD FILAMENT, PACK OF 10
8670-9125	TCD FILAMENT PROTECTION CIRCUIT (RETROFIT)
8670-9127	TCD CELL w/ FILAMENTS, SRI MODEL (EXCHANGE)
8670-9304	HEATED TRANSFER LINE ADDITION, FOR NEW BUILD GC, RT. SIDE
8670-9305	HEATED TRANSFER LINE MOD. w/ PLUG
8670-9306	HEATED TRANSFER LINE, CAPILLARY TUBING
8670-9550	SYRINGE 10 UL
8670-9554	SRI TUBING CUTTER FOR COPPER TUBING
8670-9555	TUBING COPPER 1/8", 50' ROLL
8670-9556	1/16" S.S. TUBE FOR P&T SPARGE GAS



SRIGC PRODUCTS LIST 2014

Product Catalog
2014



8680-0052	METHOD 5035 COMPLIANT VOA VIAL SPARGE ACCESSORY
8680-0352	SPARE DESSICANT CANISTER
8690-0006	AROMATIC SELECTIVE DETECTOR (ASD)
8690-0007	TCD DETECTOR
8690-0008	TCD DETECTOR, 1 FILAMENT
8690-0009	RGD DETECTOR (WITH EMPTY REACTOR)
8690-0010	FID DETECTOR
8690-0011	BLANK REACTION TUBE W/FRITS
8690-0015	NPD DETECTOR
8690-0017	TID DETECTOR
8690-0020	ECD DETECTOR
8690-0023	ADDITIONAL ON-COLUMN INJECTOR WITH EPC CIRCUIT
8690-0025	HEATED INJECTION PORT UPGRADE
8690-0030	HID DETECTOR, SRI DESIGN
8690-0034	SPLIT / SPLITLESS INJECTOR, AUTOMATED VENT
8690-0035	GAS PHASE SPLITTER
8690-0037	ON-COLUMN PTV INJECTOR UPGRADE
8690-0040	PID DETECTOR
8690-0045	HEATED STATIC HEADSPACE INJECTOR
8690-0046	HEATED STATIC HEADSPACE INJECTOR UPGRADE, TO EXISTING VALVE, VALVE OVEN
8690-0051	AUTOMATED PURGE AND TRAP CONCENTRATOR, METHOD 5030
8690-0052	AUTOMATED PURGE AND TRAP CONCENTRATOR, METHOD 5030/35
8690-0053	10 SAMPLE PURGE AND TRAP AUTOSAMPLER, w/4 RELAY BD
8690-0054	10 SAMPLE METHOD 5035 PURGE-AND-TRAP AUTOSAMPLER
8690-0060	10 PORT GAS SAMPLING VALVE, MULTIGAS 3 PLUMBING, WITH SOLENOID
8690-0061	10 PORT GAS SAMPLING VALVE, PNEUMATIC ACTUATOR
8690-0062	4 PORT LIQUID SAMPLING VALVE, ELECTRIC ACTUATOR
8690-0063	10 PORT GAS SAMPLING VALVE, MANUAL ACTUATOR
8690-0064	4 PORT LIQUID SAMPLING VALVE, MANUAL ACTUATOR
8690-0065	AUTOMATED GAS SAMPLE VALVE, 10 PORT
8690-0066	10 INPUT HEATED STREAM SELECTOR W/ TRANSFER LINE
8690-0067	BLOCK HEATER w/ CARTRIDGE FOR GAS VALVE
8690-0068	LIQUID AUTOSAMPLER CAROUSEL, 42 VIAL TRAY
8690-0069	SOLENOID-CONTROLLED GAS VALVE
8690-0070	INTERNAL WHISPER-QUIET AIR COMPRESSOR, 115V
8690-0071	PERISTALTIC PUMP, REPLACEMENT
8690-0072	SPLIT VENT VALVE
8690-0073	VACUUM PUMP INTERFACE, DATA SYSTEM CONTROLLED
8690-0074	THERMOSTATTED VALVE OVEN, HIGH TEMP. (300°C MAX.)
8690-0075	ON-LINE LIQUID SAMPLER FOR PURGE-AND-TRAP
8690-0077	22 PORT, 10 STREAM SELECTOR VALVE, AUTOMATED, STD. ALONE
8690-0078	22 PORT, 10 STREAM SELECTOR VALVE, ELECTRIC ACTUATOR, PLUMBED
8690-0079	22 PORT, 10 STREAM SELECTOR VALVE, ELECTRIC ACTUATOR, UNPLUMBED
8690-0080	FPD DETECTOR
8690-0081	METHANIZER ACCESSORY BUILT ONTO EXISTING VALVE OVEN
8690-0082	METHANIZER ACCESSORY, IN JET
8690-0083	TO-14 CRYOTRAP LOOP, AUTOMATED CONTROL
8690-0084	HEATED / FAST COOLING ADSORBENT TRAP FOR EXISTING GAS VALVE
8690-0085	SIMULTANEOUS S/P FPD DETECTOR (DFPD)
8690-0086	PELTIER COOLING w/ ELECTRONICS, FOR EXISTING TRAP
8690-0087	DGA-TOGA PERMEATION LOOP ACCESSORY
8690-0088	THERMOSTATTED VALVE OVEN
8690-0089	UNHEATED INSULATED VALVE OVEN
8690-0090	PELTIER COOLED TRAP, FOR GAS SAMPLING VALVE
8690-0091	THERMOSTATTED VALVE OVEN, NARROW, FOR 8610D GC
8690-0092	ENRICHMENT COIL ACCESSORY
8690-0093	ONLINE MEMBRANE SAMPLER W/ SPARGER FOR COOLING TOWER WATER
8690-0094	OXIDIZER ACCESSORY
8690-0095	REUSEABLE SHIPPING CONTAINER
8690-0096	DGA-TOGA EXTRACTOR ASSEMBLY
8690-0097	TRAP PACKING ACCESSORY
8690-0151	NAFION MEMBRANE REPLACEMENT FOR HYDROGEN GEN.
8690-0152	NAFION TUBING, DRYER, FOR HYDROGEN GENERATOR
8690-0153	WATER FILTER, FOR HYDROGEN GENERATOR
8690-0160	TURBO-COOL FAST OVEN COOLING
8690-0230	230VAC 50Hz CONVERSION KIT
8690-1015	NPD CONVERSION KIT FOR FID



SRIGC PRODUCTS LIST 2014

8690-1026	DELCD DETECTOR
8690-1051	METHOD TO-14 AIR CONCENTRATOR, VAC PUMP, 1 TRAP
8690-1052	METHOD TO-14 AIR CONCENTRATOR, 2 TRAP, w/TUBE DESORBER
8690-1055	METHOD TO-14 AIR CONCENTRATOR, VAC PUMP, 2 TRAPS
8690-1068	ON-LINE SYRINGE SAMPLER (NO CAROUSEL)
8690-1070	REPLACEMENT AIR FILTER
8690-1080	FPD/FID DETECTOR WITH DUAL AMPLIFIERS
8690-1081	REPLACEMENT METHANIZER TUBE
8690-1087	THERMAL DESORBER SAMPLE TUBE (PK. OF 10)
8690-1088	THERMAL SOIL DESORBER, MANUAL ACTUATOR
8690-1115	FID / NPD CONVERTIBLE DETECTOR
8690-2007	CCD DETECTOR
8690-2022	ADDITIONAL EPC CONTROL ZONE (NO INJECTOR)
8690-2023	ADDITIONAL INJECTION PORT WITHOUT EPC CONTROL/CARRIER
8690-2026	FID-DELCD DETECTOR (FID-DELCD)
8690-2084	DUAL HEATED TRAPS FOR EXISTING VALVES
8690-2085	DFFD-FID DETECTOR (3 AMPLIFIERS)
8690-2253	10 STATION PURGE-AND-TRAP AUTOSAMPLER 230V, 4 REL BD
8690-2270	INTERNAL WHISPER-QUIET AIR COMPRESSOR, 230V
8690-2615	NPD-DELCD SERIES DETECTOR
8690-5052	UPGRADE PURGE & TRAP TO 5030/5035 COMPLIANT
8690-5510	DIGITAL MULTIMETER, GENERAL PURPOSE
8690-5600	H2 / HC LEAK DETECTOR, AC POWERED, WITH DIGITAL VOLTMETER
8690-5655	H2 / HC LEAK DETECTOR, BUILT INTO 1 CH. DATA SYSTEM
8690-7000	OP-AMP CHIP, LF356 (REPLACES OP-80A)
8690-7034	HEATED SPLIT/SPLITLESS INJECTOR UPGRADE WITH PTV
8690-7100	SCR - TRIAC CIRCUIT BOARD
8690-8034	HEATED SPLIT/SPLITLESS INJECTOR UPGRADE WITH PTV, VALVE
8690-8294	METHANIZER/OXIDIZER UNIT, FOR METHOD 25-3
8690-9305	HEATED TRANSFER LINE WITH THERMOCOUPLE, 115VAC
8690-LPGH	LPG HEATED EXPANSION CHAMBER / HOMOGENIZER

