

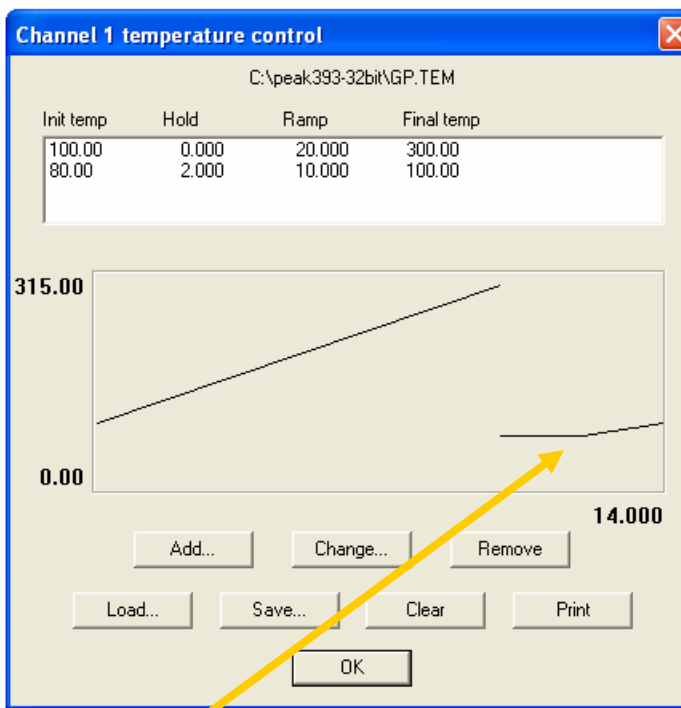
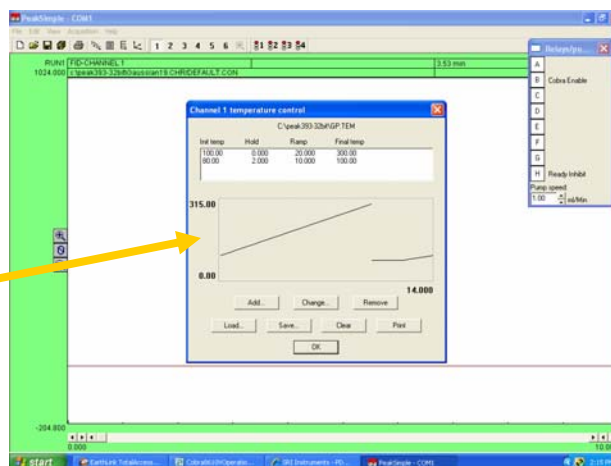
# Operation of the Cobra Autosampler on the 8610V gas chromatograph

Set up the temperature program in PeakSimple software. See the detailed tutorial and instructions at [www.srigc.com](http://www.srigc.com) for additional information.

The 8610V GC has powerful cooling fans which turn on to bring the column oven temperature down to the starting temperature at the end of the temperature program.

There are also some smaller cooling fans which blow air into the column oven to stabilize the temperature below 100C. A gate closes at 100C which stops the smaller fans from blowing the cooling air. For this reason, it is recommended that as part of the temperature program you add an additional segment which allows the oven to cool down below the starting temperature and then to ramp up slowly. This prevents the oven from overshooting the starting temperature due to heat stored in the oven's metal structure.

In the example at right, the oven is told to cool to 80C for 2 minutes, then ramp up to 100C ( the starting temperature ) at 10 degrees per minute.



Note the end time of the temperature program ( 14 minutes )