

Turn to Restek PLOT Columns for Reproducible Results

- Easier operation, better chromatography, reduced particle release.
- More reproducible retention times, virtually no spiking, and longer column lifetimes.



Delivering Consistent Chromatography to Analysts Around the Globe

Pure Chromatography

Get Leak-Free RAVE Valve Performance Every Time

- Engineered to exceed 15,000 cycles.
- Helium leak tested to 1×10^{-6} mL/sec.
- Thousands already in service.



Roc LC Columns: The Reliable Cornerstone for Your LC Lab

- Solid and reliable performance.
- Exceptional value.
- 5 phases covering 98% of USP methods.



Turn to Restek PLOT Columns for Reproducible Results

Restek's next-generation PLOT columns show a constant flow behavior and have significantly improved mechanical stability, resulting in easier operation, better chromatography, and reduced particle release. Greater particle stability also means more reproducible retention times, virtually no spiking, and longer column lifetimes.

Go to www.restek.com/PLOT for our full selection!

Rt-Msieve 5A Columns (fused silica PLOT)

Description	temp. limits	qty.	cat.#
Rt-Msieve 5A 15 m, 0.25 mm ID, 20 µm	to 300 °C	ea.	19773

Rt-Q-BOND Columns (fused silica PLOT)

100% divinylbenzene

Description	temp. limits	qty.	cat.#
Rt-Q-BOND 30 m, 0.25 mm ID, 8 µm	to 280/300 °C	ea.	19765

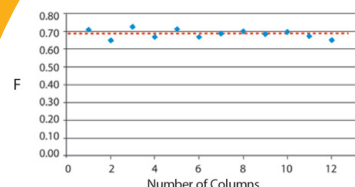
MXT-Msieve 5A Columns (Siltek-treated, stainless-steel PLOT)

Description	temp. limits	qty.	cat.#
MXT-Msieve 5A 30 m, 0.53 mm ID, 50 µm	to 300 °C	7" 11-pin cage ea.	79723
MXT-Msieve 5A 30 m, 0.53 mm ID, 50 µm	to 300 °C	3.5" Coil ea.	79723-273

MXT-Q-BOND Columns (Siltek-treated, stainless-steel PLOT)

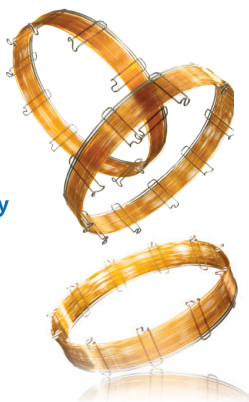
Description	temp. limits	qty.	cat.#
MXT-Q-BOND 30 m, 0.53 mm ID, 20 µm	to 280/300 °C	7" 11-pin cage ea.	79716
MXT-Q-BOND 30 m, 0.53 mm ID, 20 µm	to 280/300 °C	3.5" Coil ea.	79716-273

Consistent
flow restriction (F)
means reproducible
results column to column.



We guarantee that each and every Rxi column will perform the same way every time you order it, every time you run it, which means:

- Predictable retention times.
- Consistent elution orders.
- Fast, accurate analyses.



Rxi columns offer high reproducibility across the polarity range, so you can match a column to your analysis—and get the same results every time.

Featured Rxi Columns

Rxi-17Sil MS

Ideal for active environmental compounds, such as PAHs, PCBs, and more.

Description	temp. limits	qty.	cat.#
15 m, 0.25 mm ID, 0.25 µm	40 to 340/360 °C	ea.	14120
30 m, 0.25 mm ID, 0.25 µm	40 to 340/360 °C	ea.	14123

Rxi-624Sil MS

Ideal for volatile organics and residual solvents; a great choice for USP<467>.

Description	temp. limits	qty.	cat.#
30 m, 0.25 mm ID, 1.40 µm	-20 to 300/320 °C	ea.	13868

Rxi-5Sil MS

Ideal for semivolatiles, PAHs, chlorinated hydrocarbons, phthalates, phenols, amines, organochlorine pesticides, organophosphorus pesticides, drugs, solvent impurities, and hydrocarbons.

Description	temp. limits	qty.	cat.#
30 m, 0.25 mm ID, 0.25 µm	-60 to 320/350 °C	ea.	13623
30 m, 0.25 mm ID, 0.25 µm			
w/5 m Integra-Guard Column	-60 to 320/350 °C	ea.	13623-124

Put Rxi columns to work in your lab.
Visit www.restek.com/rxi
and order yours today.

Consistently Faster GC Analyses and Increased Lab Throughput

1 Select a Scaled-Down Rxi Column

Select an Rxi column with a smaller ID, thinner film, and shorter length to maximize your potential for lightning-fast GC runs.



2 Use the EZGC Method Translator to Deliver the Same Separation in Less Time

Try it today at www.restek.com/ezgc

3 Install a GC Accelerator Kit if Your GC Can't Handle Your New Programmed Ramp Rate

Retention times can vary wildly if your GC can't handle a programmed ramp rate and cause problems with peak ID and quantitation. But, aggressive ramp rates can reliably be achieved with a GC Accelerator kit.



Description	qty.	cat.#
GC Accelerator Oven Insert Kit for Agilent 6890 and 7890 instruments	kit	23849

Using scaled-down Rxi columns, the EZGC method translator, and the GC Accelerator kit to speed up your analyses is more involved than this quick overview. But, the full story is at www.restek.com/GCaccelerator

These and many more Restek GC columns are waiting at www.restek.com/GC

Roc LC Columns: The Reliable Cornerstone for Your LC Lab

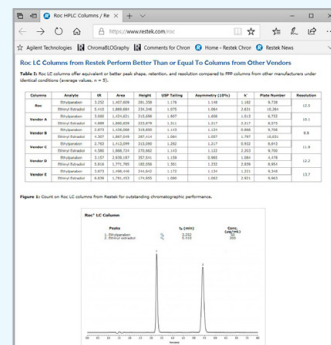
- Solid and reliable performance.
- Exceptional value.
- 5 phases covering 98% of USP methods.

Featured Roc Columns:

Roc C18 HPLC Columns (USP L1)

Length	3.0 mm cat.#	4.6 mm cat.#
5 µm Columns		
100 mm	953451E	9534515
150 mm	953456E	9534565
250 mm	953457E	9534575

Other phases and 3 µm particles also available!



Roc columns offer equivalent or better peak shape, retention, and resolution compared to fully porous columns from other manufacturers.

See how Roc LC columns stack up against the competition at www.restek.com/roc

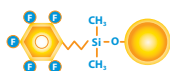
Reliably Versatile Restek FluoroPhenyl Phase:

The power of HILIC and reversed-phase modes with outstanding lot-to-lot reproducibility.

- Ideal for increasing sensitivity and selectivity in LC-MS analyses.
- Offers increased retention for charged bases.

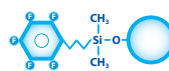


Raptor FluoroPhenyl LC Columns (USP L43)

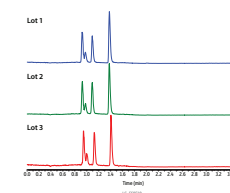
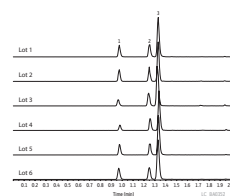


Length	2.1 mm cat.#	3.0 mm cat.#	4.6 mm cat.#
1.8 µm Columns			
30 mm	9319232	—	—
50 mm	9319252	931925E	—
100 mm	9319212	931921E	—
150 mm	9319262	—	—
2.7 µm Columns			
30 mm	9319A32	9319A3E	9319A35
50 mm	9319A52	9319A5E	9319A55
100 mm	9319A12	9319A1E	9319A15
150 mm	9319A62	9319A6E	9319A65

Force FluoroPhenyl LC Columns (USP L43)



Length	2.1 mm cat.#	3.0 mm cat.#	4.6 mm cat.#
1.8 µm Columns			
30 mm	9639232	—	—
50 mm	9639252	963925E	—
100 mm	9639212	963921E	—
3 µm Columns			
30 mm	9639332	—	—
50 mm	9639352	963935E	—
100 mm	9639312	963931E	9639315
150 mm	9639362	963936E	9639365



With Restek's FluoroPhenyl phase, you'll get the same performance after column.

Also available in 5 µm!

Learn more at www.restek.com/raptor and www.restek.com/force

Rugged, MS-Friendly Restek HILIC-Si Phase:

Simplify the switch to HILIC with dependable results on both HPLC and UHPLC systems.

- Retain polar compounds without ion-pairing reagents.
- 2.7 µm Raptor core-shell particles provide the speed of SPP.
- Ideal for increasing sensitivity and selectivity in LC-MS analyses.



Raptor HILIC-Si LC Columns (USP L3)

Length	2.1 mm cat.#	3.0 mm cat.#	4.6 mm cat.#
2.7 µm Columns			
30 mm	9310A32	—	—
50 mm	9310A52	9310A5E	9310A55
100 mm	9310A12	9310A1E	9310A15
150 mm	9310A62	9310A6E	9310A65

Learn more at www.restek.com/raptor

Get Leak-Free RAVE Valve Performance Every Time

- **Proven long life**—engineered to exceed 15,000 cycles.
- **Leak-free performance**—helium leak tested to 1×10^{-6} mL/sec.
- **Verified satisfaction**—thousands already in service.

Replacement RAVE Diaphragm Valves

For Restek air sampling canisters

Description	qty.	Siltek-treated cat.	Stainless Steel cat.
1/4" Replacement Diaphragm Valve, RAVE (2-port)	ea.	26386	26385
1/4" Replacement Diaphragm Valve, RAVE (3-port)	ea.	26388	26387
RAVE and RAVen Diaphragm Rebuild Kit (includes: diaphragms (3))	kit	26390	26389

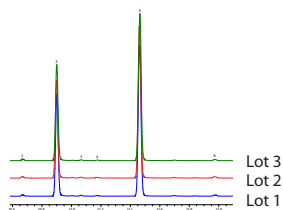
Also available for Entech air cans at
www.restek.com/air



The Next Level of True Blue Reproducibility and Performance

- **Reproducibility**—unbeatable manufacturing controls and QC testing for superior reliability across compound classes.
- **Productivity**—unparalleled cleanliness for maximized GC uptime and lab throughput.
- **Deactivation**—unbelievably low breakdown for accurate and precise low-level GC analyses.

You can expect the same great results from one lot to the next with Topaz GC inlet liners



Featured Topaz Liners:

Agilent

Split Injection: 23305 | 23300
Splitless Injection: 23303 | 23302

PerkinElmer

Split Injection: 23450 | 23449
Splitless Injection: 23451

Sciex/Bruker/Varian

Split Injection: 23328
Splitless Injection: 23332 | 23331

Shimadzu

Split Injection: 23319 | 23320
Splitless Injection: 23336 | 23322

Thermo Scientific

Split Injection: 23444 | 23267
Splitless Injection: 23447 | 23446



Learn more and find our full selection at
www.restek.com/topaz

Rely on Our Proprietary Cleaning Process for Tubing Free of Residual Organics

For plumbing GC systems:



Cleaned Copper Tubing

ID	OD	Wall	Max Operating Pressure	qty.	cat.#
0.065"	1/8"	0.030"	2,800 psig	50 ft	22628
0.190"	1/4"	0.030"	1,000 psig	50 ft	22629

For carrier, fuel, make-up, and auxiliary gas lines:



Rinsed and Cleaned 304 Stainless-Steel Tubing

ID (in.)	OD (in.)	Length							
		6 Feet	10 Feet	15 Feet	20 Feet	25 Feet	50 Feet	100 Feet	>100 Feet
0.01"	1/16"	29000	29001	29002	29003	21500	29004	29005	21502
0.02"	1/16"	29006	29007	29008	29009	21503	29010	29011	21505
0.03"	1/16"	29012	29013	29014	29015	21506	29017	29018	21508
0.04"	1/16"	29019	29020	29021	29022	21509	29023	29024	21511
0.085"	1/8"	29025	29026	29027	29028	21512	29029	29030	21514
0.21"	1/4"	29031	29032	29033	29034	21515	29035	29036	21517

*Pricing is on a per foot basis. Maximum continuous lengths are 2,000 ft (1/16" OD); 1,500 ft (1/8" OD); and 750 ft (1/4" OD). The availability of long lengths is subject to inventory constraints. Lead times may vary depending on the continuous length needed. Please inquire before ordering.

Note: While this tubing is ultra clean, it does not meet the requirements for oxygen service specifications (for example, CGA G-4.1, ASTM G93-03, and ASTM A380).

The Perfect Fit for Portable, Process, and High-Temperature GC Analysis



Metal MXT columns are rugged enough to maintain their high performance under aggressive conditions and can be coiled into extremely small diameters. That's why an MXT column was the first flown in space!

Learn more at www.restek.com/MXT

Featured Restek MXT Columns:

MXT-WAX Columns (Siltek-treated stainless steel) polar phase; Crossbond Carbowax polyethylene glycol—provides oxidation resistance

Description	temp. limits	qty.	cat.#
MXT-WAX 30 m, 0.53 mm ID, 1.00 µm	40 to 240/250 °C	3.5" Coil ea.	70655-273

MXT-1 Columns (Siltek-treated stainless steel) nonpolar phase; Crossbond dimethyl polysiloxane

Description	temp. limits	qty.	cat.#
MXT-1 30 m, 0.53 mm ID, 5.00 µm	-60 to 270/360 °C	3.5" Coil ea.	70179-273

Need a custom coil?

Contact Restek Customer Service or your local Restek representative today!

Analyze Pesticides, PCBs, Herbicides and More on a Single Rtx-CLPesticides Column Set

These convenient kits contain everything you need to assemble your dual column pair: Rtx-CLPesticides and Rtx-CLPesticides2 columns; universal angled "Y" Press-Tight connector; and a guard column.



Rtx-CLPesticides Column Kits

proprietary Crossbond phases

Note: Columns are not preconnected in these kits.

Description	qty.	cat.#
Rtx-CLPesticides Kit (0.53 mm ID)	kit	11197
Rtx-CLPesticides Kit (0.32 mm ID)	kit	11196
Rtx-CLPesticides Kit (0.25 mm ID)	kit	11199

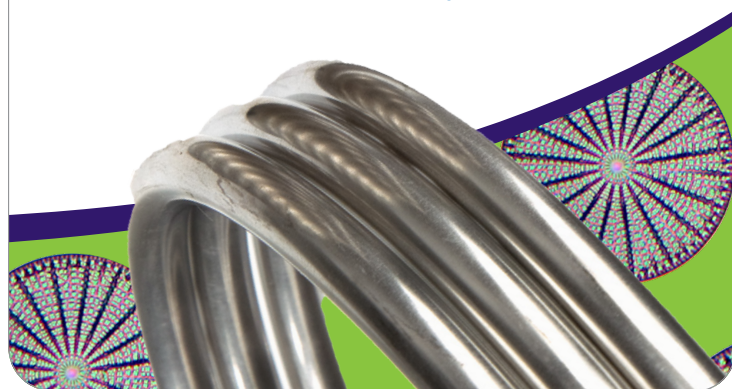
Learn more at www.restek.com/clp7

Say Goodbye to Poor Quality and Long Delivery Times for Diatomaceous Earth

Virtually unlimited in supply—but only available from Restek—DiatoSorb-W offers a reliable alternative for packed columns. After years of dealing with white diatomaceous earth brands, such as Chromosorb, being in short supply, users now have a reliable source.

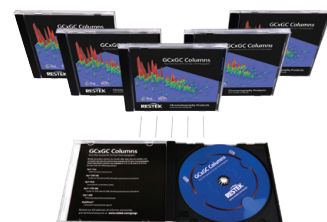
- Officially listed USP S1A and S1NS support material
- Ideal for many USP and ASTM packed column methods

Learn more at www.restek.com/diatosorb



A Range of GCxGC Secondary Columns in One Kit

Each kit includes Rxi-1ms, Rxi-5Sil MS, Rxi-17Sil MS, Rtx-200, Rxi-XLB, and Stabilwax columns (one each), as well as Press-Tight connectors. Convenient 2 m column lengths are ideal for use as secondary columns in GCxGC.



GCxGC Selectivity Kits

Description	qty.	cat.#
GCxGC (0.15 mm) Selectivity Kit	kit	15129
GCxGC (0.18 mm) Selectivity Kit	kit	15130
GCxGC (0.25 mm) Selectivity Kit	kit	15131

For guidance on which column to use when, visit www.restek.com/gcxgc-combo

Strong as Steel, Inert as Glass

Put the Power of Restek Packed Columns to Work for You

We offer a broad range of common phases as well as application-specific products developed for light hydrocarbon analysis, sulfurs, permanent gases, and ASTM Method D3606.

- Inertness of glass and the durability of stainless steel.
- Short conditioning times, low bleed, and long column lifetimes.
- Reliable, predictable results.

Need help choosing?

Whether one of our stock columns is perfect, or you need a custom, we can help you choose your next packed column by USP nomenclature, application, and more.

Learn more at www.restek.com/packedGC

Helium Supplies Are Still on the Decline— Switch to Hydrogen and Generate Your Own

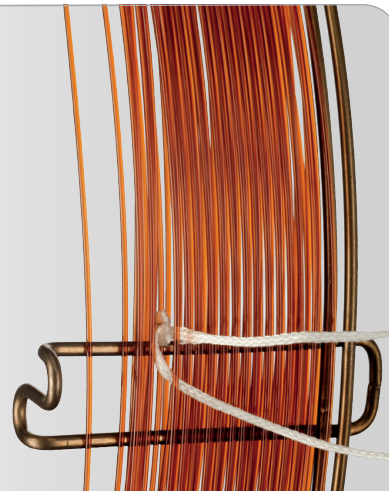
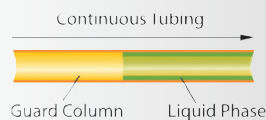


- Proton exchange membrane (PEM) cell eliminates the need for liquid electrolytes.
- Reliably generate 99.9999% pure hydrogen.
- Compact unit requires one square foot of bench space.
- Universal power adapters for U.S., Europe, and Asia.
- Automatic safety feature shuts the generator down if a leak is detected.

Model #	Capacity	Delivery Pressure	ea. cat.#
H2PEMPD-510	510 cc/min	100 psig	22144
H2PEMPD-510	510 cc/min	175 psig	22145
H2PEMPD-650	650 cc/min	100 psig	22146
H2PEMPD-650	650 cc/min	175 psig	22147
H2PEMPD-850	850 cc/min	100 psig	22148
H2PEMPD-850	850 cc/min	175 psig	22149
H2PEMPD-1100	1,100 cc/min	100 psig	22150
H2PEMPD-1100	1,100 cc/min	175 psig	22151
H2PEMPD-1300	1,300 cc/min	100 psig	22152
H2PEMPD-1300	1,300 cc/min	175 psig	22153

Visit www.restek.com/gas for our full selection of generators.

Get the Protection without the Connection



Integra-Guard columns incorporate a guard column and analytical column into one column to altogether eliminate the problems associated with this connection. Protecting your analytical column has never been easier.

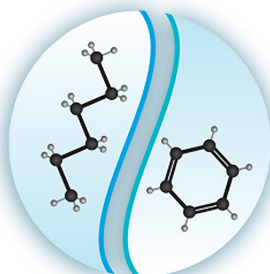
Description	qty.	cat.#
Rtx-1		
30 m, 0.25 mm ID, 0.25 µm Rtx-1 w/5 m Integra-Guard Column	ea.	10123-124
30 m, 0.53 mm ID, 1.00 µm Rtx-1 w/5 m Integra-Guard Column	ea.	10155-126
30 m, 0.53 mm ID, 5.00 µm Rtx-1 w/5 m Integra-Guard Column	ea.	10179-126
Rtx-5		
30 m, 0.25 mm ID, 0.25 µm Rtx-5 w/5 m Integra-Guard Column	ea.	10223-124
30 m, 0.25 mm ID, 0.25 µm Rtx-5 w/10 m Integra-Guard Column	ea.	10223-127
30 m, 0.25 mm ID, 1.00 µm Rtx-5 w/5 m Integra-Guard Column	ea.	10253-124
30 m, 0.32 mm ID, 0.25 µm Rtx-5 w/5 m Integra-Guard Column	ea.	10224-125
30 m, 0.32 mm ID, 1.00 µm Rtx-5 w/5 m Integra-Guard Column	ea.	10254-125
30 m, 0.53 mm ID, 5.00 µm Rtx-5/Rtx-G27 w/5 m Integra-Guard Column	ea.	10279-126
60 m, 0.32 mm ID, 0.25 µm Rtx-5 w/5 m Integra-Guard Column	ea.	10227-125
Rtx-5MS		
15 m, 0.25 mm ID, 0.25 µm Rtx-5MS w/5 m Integra-Guard Column	ea.	12620-124
15 m, 0.25 mm ID, 0.50 µm Rtx-5MS w/10 m Integra-Guard Column	ea.	12635-127
30 m, 0.25 mm ID, 0.10 µm Rtx-5MS w/5 m Integra-Guard Column	ea.	12608-124
30 m, 0.25 mm ID, 0.25 µm Rtx-5MS w/5 m Integra-Guard Column	ea.	12623-124
30 m, 0.25 mm ID, 0.25 µm Rtx-5MS w/10 m Integra-Guard Column	ea.	12623-127
30 m, 0.25 mm ID, 0.50 µm Rtx-5MS w/5 m Integra-Guard Column	ea.	12638-124
30 m, 0.25 mm ID, 0.50 µm Rtx-5MS w/10 m Integra-Guard Column	ea.	12638-127
30 m, 0.32 mm ID, 0.25 µm Rtx-5MS w/5 m Integra-Guard Column	ea.	12624-125
30 m, 0.32 mm ID, 1.00 µm Rtx-5MS w/5 m Integra-Guard Column	ea.	12654-125
Rxi-5Sil MS		
15 m, 0.25 mm ID, 0.25 µm Rxi-5Sil MS w/10 m Integra-Guard Column	ea.	13620-127
30 m, 0.25 mm ID, 0.25 µm Rxi-5Sil MS w/5 m Integra-Guard Column	ea.	13623-124
30 m, 0.25 mm ID, 0.25 µm Rxi-5Sil MS w/10 m Integra-Guard Column	ea.	13623-127
15 m, 0.25 mm ID, 0.50 µm Rxi-5Sil MS w/5 m Integra-Guard Column	ea.	13635-124
30 m, 0.25 mm ID, 0.50 µm Rxi-5Sil MS w/5 m Integra-Guard Column	ea.	13638-124
30 m, 0.25 mm ID, 0.50 µm Rxi-5Sil MS w/10 m Integra-Guard Column	ea.	13638-127
30 m, 0.32 mm ID, 0.50 µm Rxi-5Sil MS w/5 m Integra-Guard Column	ea.	13639-125
30 m, 0.32 mm ID, 1.00 µm Rxi-5Sil MS w/5 m Integra-Guard Column	ea.	13654-125
Rtx-624		
30 m, 0.25 mm ID, 1.40 µm Rtx-624 w/5 m Integra-Guard Column	ea.	10968-124
30 m, 0.32 mm ID, 1.80 µm Rtx-624 w/5 m Integra-Guard Column	ea.	10970-125
30 m, 0.53 mm ID, 3.00 µm Rtx-624 w/5 m Integra-Guard Column	ea.	10971-126
Rtx-1301		
30 m, 0.53 mm ID, 3.00 µm Rtx-1301 w/5 m Integra-Guard Column	ea.	16085-126
Rtx-1701		
30 m, 0.25 mm ID, 0.25 µm Rtx-1701 w/5 m Integra-Guard Column	ea.	12023-124
Stabilwax		
30 m, 0.25 mm ID, 0.25 µm Stabilwax w/5 m Integra-Guard Column	ea.	10623-124
30 m, 0.32 mm ID, 1.00 µm Stabilwax w/5 m Integra-Guard Column	ea.	10654-125
30 m, 0.53 mm ID, 1.00 µm Stabilwax w/5 m Integra-Guard Column	ea.	10655-126

Resprep EPH Fractionation SPE Cartridges:

Now in a 2 g Format

These high-performing SPE cartridges completely separate aliphatic and aromatic compounds and are guaranteed to produce background levels that meet MA and NJ EPH method requirements. If you don't need the higher loading capacity of 5 g cartridges, the 2 g format has these advantages:

- Reduce solvent waste by ~66%.
- Save over an hour of sample prep time.
- Ideal for automated systems.



Description	Volume	qty.	cat.#
Resprep EPH Fractionation SPE Cartridge	6 mL, 2 g	30-pk.	25999

The Difference is Clear

CarboPrep Plus SPE cartridges In stock and ready for your lab!

- Proprietary treatment renders the carbon consistent and clean, ensuring the same selectivity with no interfering background.
- Designed specifically for organochlorine pesticides analysis.
- Excellent alternative to Florisil products, especially for the removal of nonvolatile matrix components that contaminate GC inlets and columns.
- Uses the same hardware, solvents, and solvent volumes as traditional Florisil cleanup, so switching is simple.

Description	Volume	qty.	cat.#
Resprep CarboPrep Plus SPE Cartridges	3 mL, 95 mg	30-pk.	25845



Two Sources of Pi-Marked Gas Calibration Standards – One Convenient Order

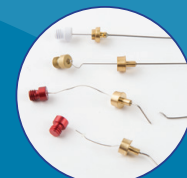
- Independently manufactured by two different sources; easily meet 2nd source lab requirements.
- Pi-marked cylinders available for the EU.
- Drop-shipped directly to you for maximum shelf life (min. 12 months).
- Each cylinder comes with a certificate of analysis and unique serial number.
- All cylinders are disposable.



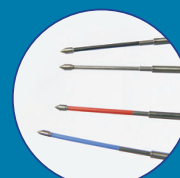
Find your gas
calibration standards
at www.restek.com/2ndsource

SPME Arrow: New Phases Available!

- Enjoy longer lifetimes: Arrow construction protects the phase and minimizes both damage and analyte loss.
- Avoid downtime due to breakage.
- Eliminate septa coring.



Standard SPME Fibers



SPME Arrow

Learn more at www.restek.com/spme

	Material	Hub Color	Thickness (µm)	Needle Diameter (mm)	Recommended Analytes	qty.	cat.#
	Polydimethylsiloxane (PDMS)	Red	100 µm	1.1 mm	Volatile, 60–275 g/mol*	ea.	27485
NEW!	Polydimethylsiloxane (PDMS)	Red	100 µm	1.5 mm	Volatile, 60–275 g/mol*	ea.	27877
	Polydimethylsiloxane (PDMS)	Black	250 µm	1.5 mm	Volatile, 60–275 g/mol (high capacity)*	ea.	27484
	Polyacrylate	Gray	100 µm	1.1 mm	Polar, semivolatile, 80–300 g/mol*	ea.	27488
	Carbon Wide Range (WR)/PDMS	Light Blue	120 µm	1.1 mm	Highly volatile, 30–225 g/mol*	ea.	27487
NEW!	Carbon Wide Range (WR)/PDMS	Light Blue	120 µm	1.5 mm	Highly volatile, 30–225 g/mol*	ea.	27879
	Divinylbenzene (DVB)/PDMS	Violet	120 µm	1.1 mm	Amines and polar compounds, 60–300 g/mol*	ea.	27486
NEW!	Divinylbenzene (DVB)/PDMS	Violet	120 µm	1.5 mm	Aromatic semivolatile, 60–300 g/mol*	ea.	27878
NEW!	DVB/Carbon WR/PDMS	Dark Gray	120 µm	1.1 mm	Volatile and semivolatile, 40–275 g/mol*	ea.	27875
NEW!	DVB/Carbon WR/PDMS	Dark Gray	120 µm	1.5 mm	Volatile and semivolatile, 40–275 g/mol*	ea.	27876
	SPME Arrow Method Development Kit					Set	27489

*These molecular weight ranges are a reasonable approximation; however, end users should verify suitability for their specific application.

Due to the relatively large diameter of Restek PAL SPME Arrows, you must modify the GC inlet using an instrument-specific conversion kit from Restek prior to use.

Build a rock-solid analytical foundation with Restek reference standards

Even with Restek's industry-leading GC and LC columns, sample preparation materials, and accessories, you won't get the results your customers demand without support from the finest reference standards available. Restek standards offer you the extended shelf life, unsurpassed stability, and outstanding chromatographic performance you need to get your work done right.

On the Shelf and Ready to Ship

We maintain an active inventory of more than 1,500 different reference standards—routinely stocking multiple lots of our most popular calibration standards—and we pull inventory months before its expiration date. If it's in our catalog, your next standard is likely in our warehouse and waiting for your order.

Featured Reference Standards:



Diesel #2/Mineral Oil (2 components)

Diesel fuel #2 composite (68334-30-5)
Mineral oil (8042-47-5)

5,000 µg/mL each in hexane, 1 mL/ampul

cat.# 31676 (ea.)



Food Industry FAME Mix (37 components)

Contains compounds ranging from C4:0 to C24:1. Search "35077" at www.restek.com for detailed compound list.

30 mg/mL total in methylene chloride, 1 mL/ampul

cat.# 35077 (ea.)



Oxy SetUp Blend (29 components)

Benzene, 1.00%	Methyl tert-butyl ether, 10.0%
tert-Butanol, 0.50%	1-Methylcyclopentene, 0.50%
Cyclohexane, 28.9%	1-Methyl-2-ethylbenzene, 0.50%
n-Decane, 1.00%	1-Methylnaphthalene, 0.25%
2,3-Dimethylbutane, 0.50%	5-Methylnonane, 0.20%
trans-1,2-Dimethylcyclopentane, 0.50%	Naphthalene, 0.50%
2,3-Dimethylheptane, 0.20%	n-Nonane, 2.00%
Dodecane, 0.25%	n-Octane, 2.00%
Ethanol, 8.00%	n-Pentane, 2.00%
Ethylbenzene, 25.0%	1,2,3,5-Tetramethylbenzene, 0.25%
3-Ethylpentane, 0.20%	Toluene, 7.00%
n-Heptane, 2.00%	Tridecane, 0.25%
n-Hexane, 2.00%	2,3,3-Trimethylpentane, 0.50%
2-Methylbutene-2, 2.50%	Undecane, 0.50%
	p-Xylene, 1.00%

2 mL prescored ampul

cat.# 33034 (ea.)

Quantity discounts not available. No data pack available.



Residual Solvents Class 3 - Mix A (24 Components)

Certified reference materials (CRMs) manufactured and QC-tested in ISO-accredited labs satisfy your ISO requirements.

Acetone (67-64-1)
Anisole (100-66-3)
1-Butanol (71-36-3)
2-Butanol (sec-butyl alcohol) (78-92-2)
2-Butanone (MEK) (78-93-3)
Butyl acetate (123-86-4)
Diethyl ether (ethyl ether) (60-29-7)
Dimethyl sulfoxide (DMSO) (67-68-5)
Ethanol (64-17-5)
Ethyl acetate (141-78-6)
Ethyl formate (109-94-4)
(C7) n-Heptane (142-82-5)
Isobutanol (2-methyl-1-propanol) (78-83-1)

Isobutyl acetate (110-19-0)
Isopropyl acetate (108-21-4)
Methyl acetate (79-20-9)
3-Methyl-1-butanol (isoamyl alcohol) (123-51-3)
4-Methyl-2-pentanone (MIBK) (108-10-1)
Methyl-tert-butyl ether (MTBE) (1634-04-4)
(C5) n-Pentane (109-66-0)
1-Pentanol (71-41-0)
1-Propanol (71-23-8)
2-Propanol (isopropanol) (67-63-0)
Propyl acetate (109-60-4)

5,000 µg/mL in N,N-Dimethylformamide, 1 mL/ampul

cat.# 36013 (ea.)

Go to www.restek.com/standards for our full selection of stock reference standards!