

# Model 420 Ethanol analysis

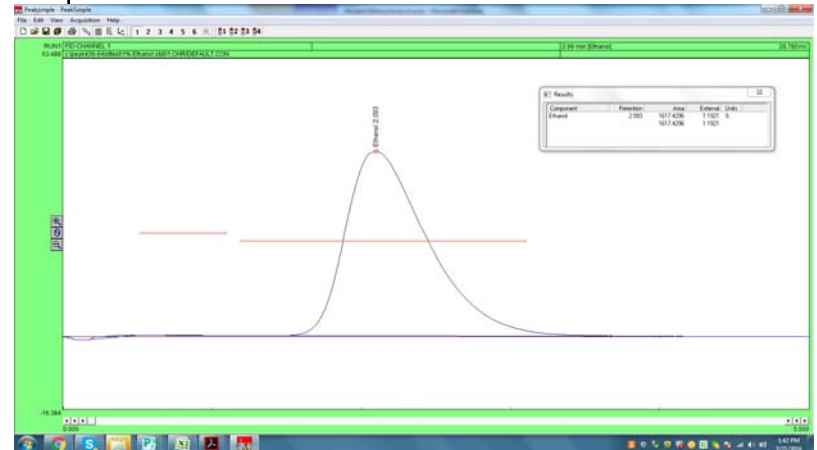
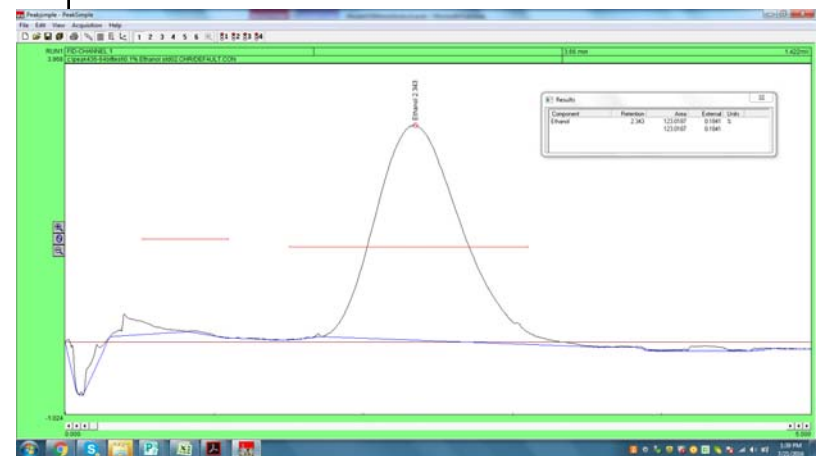
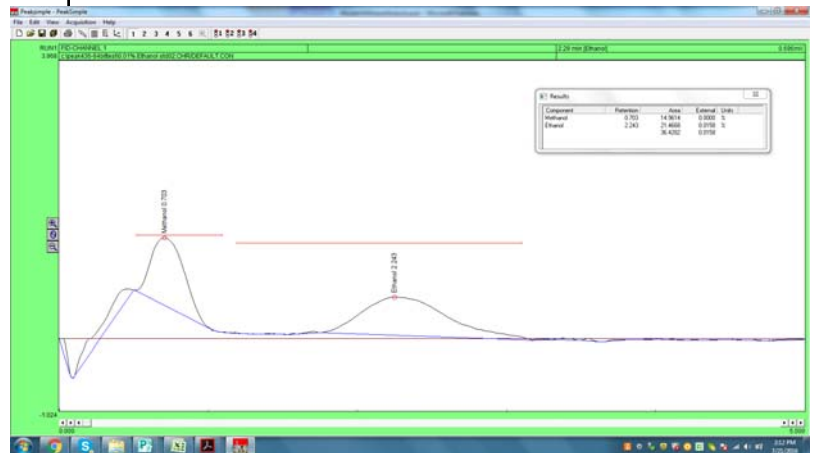


The Model 420 SRI GC is perfect for ethanol analysis.

The top chromatogram shows 0.01% Ethanol in water ( 100ppm ). You can see a methanol peak of about the same size also.

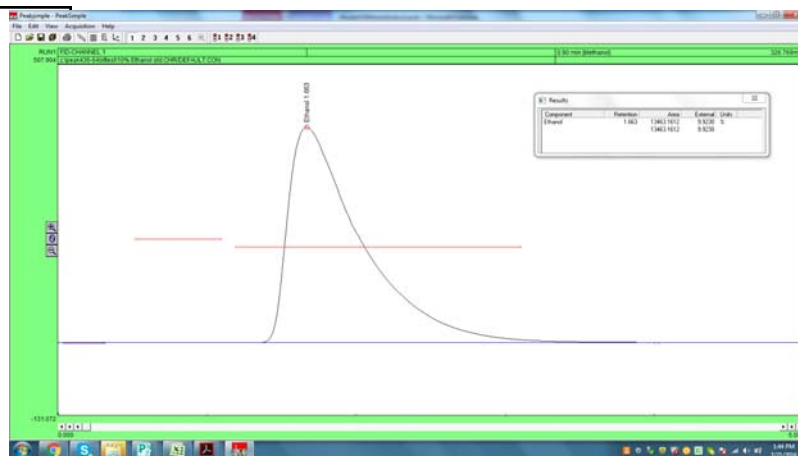
The middle is 0.1% in water

The bottom chromatogram shows 1% in water

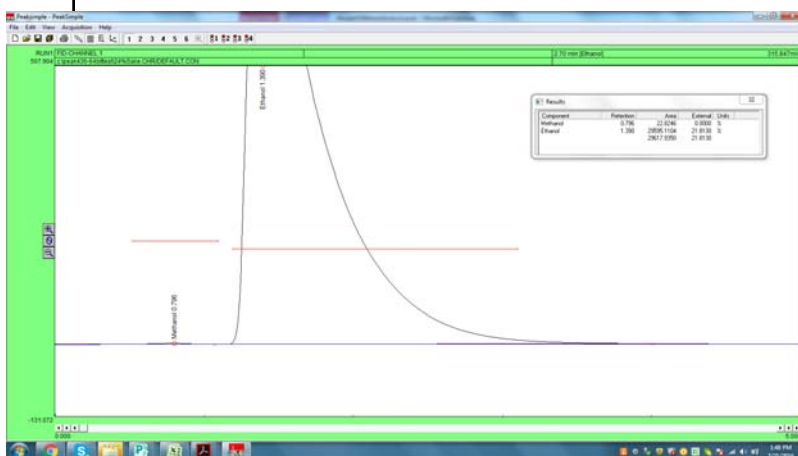


# Model 420 Ethanol analysis

This is 10% ethanol in water.



This is Japanese Soju with 24% ethanol.



Here is the calibration curve for ethanol.

