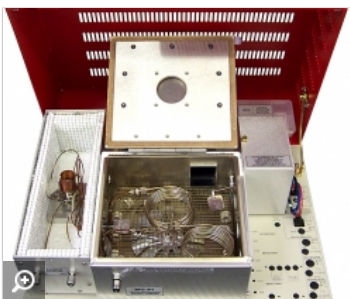


MULTIPLE GAS ANALYZER #1 GC
approx. 2016

**Prices are in USD FOB-USA : AUD adjusted to prevailing XR
add Import Freight / Charges+ Aust GST
Payment with Purchase Order**



Multiple Gas Analyzer #1 GC

Multiple Gas Analyzer #1 GC

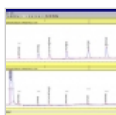
- Separates multiple gases with a single injection
- Tolerant of user adjustments and timing variations
- Simpler than other multiple gas capable systems
- TCD detector
- molecular sieve 13X & silica gel packed columns
- 10-port gas sampling valve and 1cc fixed volume loop
- 1 channel PeakSimple data system on the compact 8610C chassis (8610V also available)



MG#1

MG#1b

8610-0072



8610-0073

The SRI Multiple Gas Analyzer #1 GC System (MG#1) can separate multiple gases with a single injection. It is pre-plumbed and ready to resolve H₂, O₂, N₂, methane, CO, ethane, CO₂, ethylene, acetylene, propane, butanes, pentanes and C₆, if desired. The MG#1 is tolerant of user adjustments and timing variations because it is simpler than other multi-gas capable systems. Unlike complicated and timing-critical gas analysis configurations with three or four columns and three or four valves, the MG#1 uses a single 10-port gas sampling valve and two packed columns: a 6 foot long molecular sieve 13X packed column, and a 6 foot long silica gel packed column.

The basic Multiple Gas Analyzer #1 is equipped with a TCD detector for detection limits in the 100 - 300 ppm range. The second option is a TCD-Methanizer-FID configuration, which provides 5 ppm detection limits for CO, CO₂, and all hydrocarbons. The third option is a TCD-HID configuration for detection limits in the 10 ppm range for all analytes.

This chromatogram shows the separation of a 1% Gas Mix + 2% ethane sample on a basic, TCD-equipped MG#1.

This MG#1 version includes:

- TCD detector
- FID-methanizer
- molecular sieve 13X & silica gel columns
- temperature programmable column oven
- 10-port gas sampling valve and loop
- 6 channel USB PeakSimple data system
- on-column injector

+ as options



Typical MG#1
TCD FID-Meth Shown

FID measures the C₁-C₆ hydrocarbons, plus CO and CO₂, which are converted to methane by the methanizer in the FID jet. (LOD ~1ppm)

TCD measures hydrogen, oxygen, nitrogen, methane, and other compounds whose concentrations are at least 100 - 300 ppm.

HID measures ALL above(+ N₂O 1% down to ~10ppm
< midppB with adequate Gas Purification & attention to ambient Air infusion

(Prices as of January 1, 2022. PRICES ARE SUBJECT TO CHANGE.
CONSULT MOST RECENT PRICELIST.)

8610-0070 Multiple Gas Analyzer #1 with TCD detector and 1 channel PeakSimple data system \$13,814.00 **A\$17746**

8610-0071 Multiple Gas Analyzer #1 with TCD, methanizer, FID, built-in "whisper quiet" air compressor, and 6 channel PeakSimple data system \$20,029.00 **A\$25860**

8610-0072 Multiple Gas Analyzer #1 with TCD and HID detectors, and 6 channel PeakSimple data system \$20,009.00 **A\$25369**

8610-0073 Multiple Gas Analyzer #1 + Sulfur, with TCD, methanizer, FID, FID/FPD, 60 meter capillary column, built-in "whisper quiet" air compressor, and 6 channel PeakSimple data system \$27,531.00

(VOLTAGE: for 230VAC, use "8610-0070-2" or "8610-0071-2" or "8610-0072-2" or "8610-0073-2" (add "-2" to part number))

About SRI Instruments

SRI Instruments is a manufacturer of high quality chromatography instruments and accessories. Our GC systems offer fast and simple cannabis analysis solutions. We take pride in providing our customers with exceptional service and attention, which is reflected in our high level of customer satisfaction. When you call SRI Instruments, you get the answers you seek from our knowledgeable technical staff.

**Current A\$ ExGST
Oct22 FOB-USA**

**8610-0571-2 MG#5
A\$29805.90**