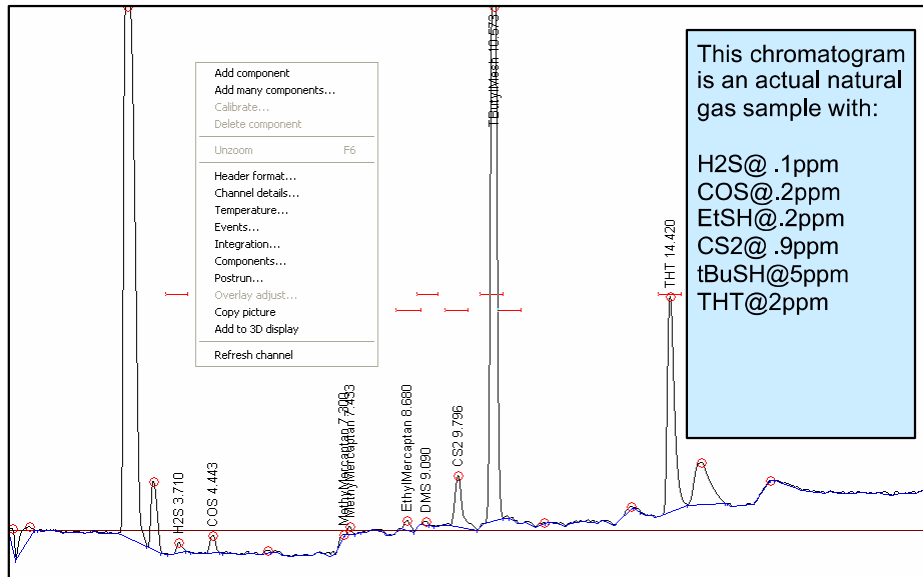
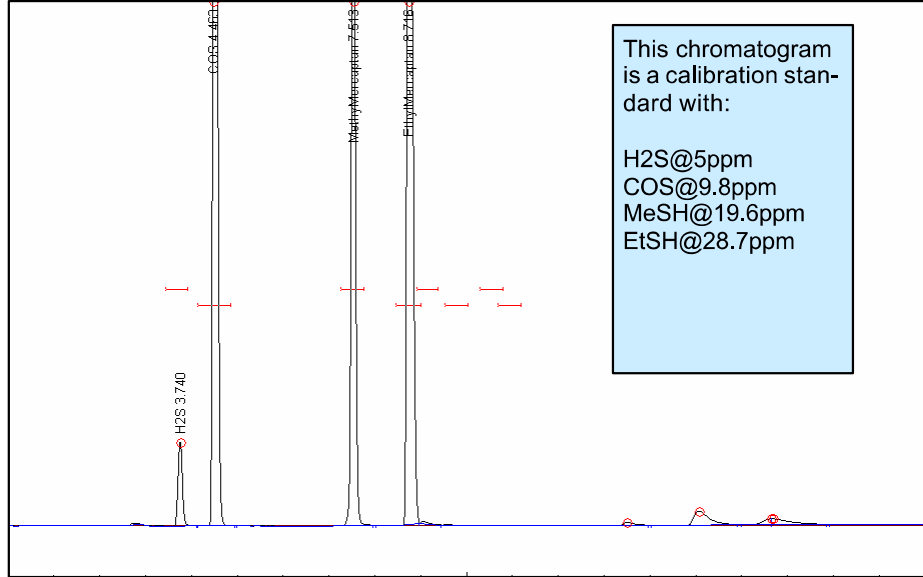


# Sulfur in Natural Gas GC System

For the laboratory or field portable

The SRI **Sulfur in Natural Gas GC System** uses two columns, a 60 meter MXT 1 and a 15 meter Rt-Q Plot and a unique stop flow solenoid valve to chromatographically separate the sulfur peaks from hydrocarbon interferences.

An FPD/FID detector is used to simultaneously measure the Sulfur compounds and also the Hydrocarbons. The operator can easily verify that the hydrocarbons do not interfere with the sulfur peaks ( a common problem with other similar systems )



**8610-6555 Sulfur in Natural Gas GC System \$17495.00**  
 Includes: SRI 8610C GC with 6 channel USB data system, PeakSimple software, FPD/FID detector, two capillary columns, stop flow valve, 10 port gas sampling valve, heated valve oven, and built-in air compressor