

Valve Selection

Following is an overview of the many types of valves available from VICI.

Valco Injectors and Valves for GC

pages 96–99, 102–111

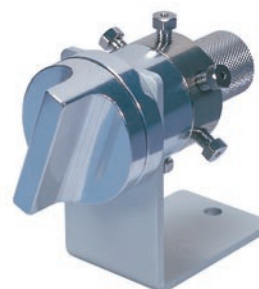
For nearly 40 years Valco valves have been the industry standard in gas chromatography. Models are available with 3, 4, 6, 8, 10, 12, or 14 ports, with 1/32", 1/16", 1/8", or 1/4" fittings, and with bore sizes from 0.25 mm (.010") to 4 mm (.156"). In addition, Valco valves offer the widest range of rotor and body materials of any valve available, with alloys and polymer composites capable of meeting virtually any system requirement. All models can be ordered in manual, pneumatic, or electrically actuated versions.



Valco Injectors and Valves for HPLC

pages 96–99, 112–116

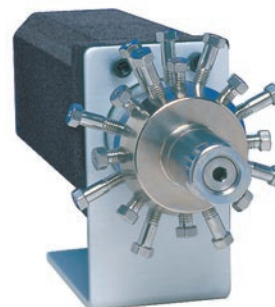
A pioneer and industry leader in products for HPLC, Valco continues to offer the market's most diverse line in terms of number of ports, fitting sizes, materials of construction, and actuation. 3, 4, 6, 8, 10, 12 port versions are offered, with 1/32", 1/16", or 1/8" fittings. As with the GC line, Valco valves offer the widest range of rotor and body materials of any valves available, with alloys and polymer composites capable of meeting virtually any system requirement. All models can be ordered in manual, pneumatic, or electrically actuated versions.



Valco Selectors

pages 100–101, 122–133

One inherent benefit of the Valco conical rotary design is that it allows multiple planes of ports, facilitating a variety of unique multiposition configurations useful for stream selection, column selection, or trapping. Versions are available for GC and HPLC applications, with 1/16", 1/8", or 1/4" fittings, with bore sizes from 0.40 to 4.0 mm (.016" to .156"). Selectors are available for up to 16 streams (34 ports), all with Valco's trademark flexibility in terms of actuation and material options.



Diaphragm Valves for GC

pages 140–143

A diaphragm valve consists of plungers and ports arranged in a circular pattern, with the plungers controlled by the reciprocating action of two air actuated pistons. Extremely long lifetime (typically 1,000,000 cycles at ambient temperature; approximately 500,000 cycles at elevated temperatures), very short actuation time (10 milliseconds), minimum internal dead volume, and reliability have made this type of valve very successful in process gas chromatography for both sample injection and column switching. Our miniature version features 1/16" or 1/32" zero dead volume fittings, and is the first to offer a 10 port configuration in addition to the 6 port and internal sample 4 port models.



CHROMalytic TECHnology Pty Ltd AUSTRALIAN Distributors e-mail: sales@chromtech.net.au Tel: 03 9762 2034